



2012 Alaska Marine Science Symposium
Posters and Exhibits
January 16 and 17
5:45 pm to 9 pm

Dena'ina Civic & Convention Center
Idlughet (Eklutna) Exhibit Hall





Welcome to the Poster Session and Exhibits for the 2012 Alaska Marine Science Symposium. This year the location of the Poster Session and Exhibits will be in the Dena'ina Civic & Convention Center, Idlughet (Eklutna) Exhibit Hall, Room 1. Here is a basic map on how to get there:

For posters, you can use this program is intended to guide your through the Poster sessions and the Exhibits. For Exhibits, simply refer to the diagram on pages 17-18. You'll also find exhibiting organizations listed by full name on page 32.

You can use this program to locate posters by author or by topic. To find a particular first author, refer to the alphabetic listing on pages 2-16. Or to browse by section (topic), use the list on pages 19-32. After you've found the poster listing, use the row # and poster # to locate the poster on the diagram on pages 17-18.



Note that poster presenters will be standing by their posters to answer questions during specified times called "Waves". Simply cross-reference the "Wave #" on a particular poster listing to the Wave times shown at the bottom of this page.

Contents

	Page
Poster presentations sorted alphabetically by presenter	2
Diagram of Room 1 of Idlughet (Eklutna) Exhibit Hall with Poster Panels number for posters and exhibit spaces	17-18
Poster presentations sorted by Sections and poster numbers	19
List of Exhibitors	32

For poster presenters:

Reminders from the poster informational emails sent out to all presenters:

1. Your poster should stay up for both days of the Poster Sessions - Monday and Tuesday, January 16 and 17.
2. You MUST have your poster down by the end of the second poster session on Tuesday at 9:00pm or risk the loss of your poster.
3. You can start putting up your poster by noon on Monday. Use this program to locate your position in the room for your poster location. There will be a large diagram poster in the lobby to assist you also.
4. T-pins and/or push-pins will be provided to assist with mounting your poster on the foam core boards of the poster panels. Folders for handouts are also provided.
5. Please DO NOT mount heavier items on the poster panels as they cannot take the weight of more than poster materials.
6. It is highly encouraged to take your poster tubes with you as the tubes can get kicked around and may get lost (happened last year).
7. Please be available to stand next to your poster at the time (Wave #) you are designated. Wave times are:

Monday (Arctic Ocean and Bering Sea/Aleutian Islands)	Tuesday (Gulf of Alaska)
Wave 1 - 5:45pm to 7:15pm	Wave 1 - 5:45pm to 7:15pm
Wave 2 - 7:20pm to 8:50pm	Wave 2 - 7:20pm to 8:50pm

ALPHABETICALLY SORTED

Row #	Poster #	LME	Section	Authors	Title	Wave #	Student Judging #
14	205	Arctic	Climate and Oceanography	Jared Abraham	A promising tool for subsurface permafrost mapping: An application of airborne geophysics	2	
7	91	Arctic	Mammals	Lisanne A.M. Aerts, Alex Kirk, Kate Lomac-MacNair, Alexandra McFarland, Bridget Watts, Pam Seiser, and Jay Brueggeman	Seals and walrus distribution in the offshore northeastern Chukchi Sea: Relation with potential organisms	1	
17	242	Gulf of Alaska	Mammals	Russel D. Andrews, Jan M. Straley, Gregory S. Schorr, Aaron M. Thode, John Calambokidis, Chris R. Lunsford, John R. Moran, and Victoria O'Connell	Untangling longline depredation: LIMPET tags on eastern Gulf of Alaska sperm whales reveal deep dives and local movements around the shelf-edge that contrast with rapid, long-distance migrations across stock boundaries	1	
11	168	Gulf of Alaska	Ecosystem Perspectives	Benjamin Applegate, Birgit Hagedorn, and John M. Kennish	Marine plastic debris: A potential vector for POPs in the marine ecosystem	1	
11	169	Gulf of Alaska	Ecosystem Perspectives	Mayumi Arimitsu, John Piatt, Keith Hobson, Leonard Wassenaar, and Erica Madison	Using stable isotopes to estimate glacier melt-water impacts on nearshore productivity in the Gulf of Alaska	2	270
14	203	Arctic	Climate and Oceanography	Carin J. Ashjian, Robert G. Campbell, Kathy J. Kuletz, Samuel R. Laney, Krista L. Longnecker, Calvin M. Mordy, Stephen R. Okkonen, and Dean A. Stockwell	A winter expedition to explore the biological and physical conditions of the Bering, Chukchi, and southern Beaufort seas	1	
10	158	Arctic	Ecosystem Perspectives	Craig Bartling, Seth Faith, Mick Arthur, Bernhard Metzger, and Alan Tilstone	The use of 'Omic' technologies to study microbial response to North Slope crude oil in Alaska	1	
9	125	Bering Sea	Mammals	Brian C. Battaile, Chad A. Nordstrom, and Andrew W. Trites	Contrasting meso-scale foraging behavior of northern fur seals (<i>Callorhinus ursinus</i>) from two Bering Sea islands with dramatically different population trends	1	
4	59	Gulf of Alaska	Lower Trophic Levels	Sonia Batten	Over a decade of monitoring lower trophic levels on the Alaskan shelf	1	
5	61	Gulf of Alaska	Lower Trophic Levels	C.J. Beegle-Krause, Melanie Schroeder, Deborah French McCay, Xiaochun Wang, and Yi Chao	LarvaMap – a web based larval behavior model for Prince William Sound and high latitude Pacific	1	
4	52	Bering Sea	Lower Trophic Levels	Jenefer Bell and Joyce Soong	2011 Norton Sound benthic trawl survey	1	
9	127	Bering Sea	Mammals	Olga Belonovich, Sergey Fomin, and Ludmila Konovalova	Killer whales predation off Severnoe rookery, the Commander Islands, Russia	1	
16	230	Arctic	Seabirds	Jane Belovarac and Robert Walton	An atlas of sea duck blood cells	1	
1	1	Arctic	Fish and Fish Habitat	Mark Blakeslee, Katrin Iken, and Brenda Konar	Mapping of a kelp bed on rocky substrate near Peard Bay, Chukchi Sea, using imagery from a towed video/sonar sled	1	
17	244	Gulf of Alaska	Mammals	Rachael Blevins, Shannon Atkinson, Marc Lammers, and Robert Small	Calling behavior of Cook Inlet beluga whales	1	351
4	45	Arctic	Lower Trophic Levels	Bodil A. Bluhm, Rolf Gradinger, and Katrin Iken	Beaufort Gyre sea ice biota at the end of summer melt	1	
4	46	Arctic	Lower Trophic Levels	Bodil A. Bluhm and Katrin B. Iken	Population assessment of snow crab, <i>Chionoecetes opilio</i> , in the Beaufort Sea: Preliminary findings	1	
17	246	Gulf of Alaska	Mammals	Gail Blundell and Grey Pendleton	Factors affecting haul-out probability of harbor seals in tidewater glacier inlets	1	
6	82	Gulf of Alaska	Humans	G. Carl Schoch, Rob Bochanek, and Susan Saupe	A collaboration for oil spill planning and response: Demonstration of the Cook Inlet response tool	1	

ALPHABETICALLY SORTED

Row Poster		ALPHABETICALLY SORTED				Wave Student	
#	#	LME	Section	Authors	Title	#	Judging #
2	20	Gulf of Alaska	Fish and Fish Habitat	Kevin M. Boswell, Johanna J. Vollenweider, John M. Moran, Ron A. Heintz, Jason K. Blackburn, and David J. Csepp	Humpback whale foraging structures winter schooling behavior of Pacific herring and facilitates commensal predation by multiple predators	1	
7	93	Arctic	Mammals	Peter Boveng, Michael Cameron, John Goodwin, and Alex Whiting	Seasonal migration of bearded seals between intensive foraging patches	1	
18	248	Gulf of Alaska	Mammals	Lizabeth Bowen, James L. Bodkin, Brenda Ballachey, Michael Murray, and A. Keith Miles	Gene transcript profiles in sea otters (<i>Enhydra lutris</i>): A new paradigm in ecosystem health	1	
7	95	Arctic	Mammals	John R. Brandon, Tannis Thomas, Susanna Blackwell, William R. Koski, Darren S. Ireland, Craig Reiser, Marc Bourdon, Dale W. Funk, and A. Michael Macrander	Ice, seismic activity and the 2010 fall migration of bowheads through Harrison Bay in the central Beaufort Sea	1	
10	152	Arctic	Ecosystem Perspectives	Jeffrey F. Bromaghin, Monique M. Lance, Elizabeth W. Elliot, Steven J. Jeffreies, John M. Kennish, and Alejandro Acevedo-Gutierrez	Estimating mean predator diet composition using fatty acid signature data	1	
7	97	Arctic	Mammals	Amelia Ann Brower, Cynthia Christman, Megan Ferguson, Janet Clarke, Stephanie Grassia, Rebecca Shea, Brenda Rone, and Amy Kennedy	Eastern North Pacific gray whales and Minke whales from aerial surveys in the Alaskan Arctic, summer and fall 2011	1	
15	223	Gulf of Alaska	Climate and Oceanography	Noa Bruhis and David Hill	High-resolution monthly precipitation and temperature grids for Alaska, USA: A resource for hydrological studies	2	290
7	98	Arctic	Mammals	Anna Bryan, Lori Quakenbush, and Lara Horstmann-Dehn	How well do stable isotopes represent bearded seal diet?	2	160
2	22	Gulf of Alaska	Fish and Fish Habitat	Michele Buckhorn and Richard Thorne	Acoustic assessment of juvenile herring in Prince William Sound	1	
5	75	Bering Sea	Humans	Lidiya Alexandrovna Bukina	Trichinellosis in marine mammals as a zoonotic disease, and possible ways of transmission of <i>Trichinellosis</i> to humans in the Chukchi Peninsula	1	
9	129	Bering Sea	Mammals	Vladimir N. Burkanov, Alexey V. Altukhov, Russel D. Andrews, Donald G. Calkins, and Thomas S. Gelatt	Steller sea lion (<i>Eumetopias jubatus</i>) demographic studies in Russian waters	1	
11	161	Bering Sea	Ecosystem Perspectives	Douglas M. Burn	Introducing the Aleutian and Bering Sea Islands Landscape Conservation Cooperative	1	
6	77	Bering Sea	Humans	Jennifer Burns, David Withrow, Yoko Kugo, Davin Holen, Jaime Van Lanen, Helen Aderman, and Tatiana Askoak	Examining vulnerable seal populations in Lake Iliamna using local knowledge and western science techniques	1	
6	83	Gulf of Alaska	Humans	Catherine Bursch	Growing a sustainable community monitoring program	1	
9	131	Bering Sea	Mammals	Michael Cameron, Peter Boveng, Erin Moreland, Jay Ver Hoef, and Vladimir Chernook	Synoptic aerial surveys and abundance estimates for ice-associated seals in US and Russian waters	1	
5	63	Gulf of Alaska	Lower Trophic Levels	Rob William Campbell	State of the Sound: Recent oceanographic conditions in Prince William Sound	1	
7	99	Arctic	Mammals	Sara S. Carroll, Lara Horstmann-Dehn, and Brenda L. Norcross	A drill in time: Stable isotope analysis of ice-seal claws	1	138
10	154	Arctic	Ecosystem Perspectives	Douglas Causey, Naomi A. Bargmann, Veronica A. Padula, Kurt Burnham, Jennifer Burnham, and Jeffrey Welker	Biogeochemical indicators of change in arctic and subarctic marine bird communities: Alaska and Greenland	1	

ALPHABETICALLY SORTED

Row Poster		ALPHABETICALLY SORTED				Wave Student	
#	#	LME	Section	Authors	Title	#	Judging #
18	249	Gulf of Alaska	Mammals	Elle Chenoweth, Christine Gabriele, and David Hill	Humpback whale habitat selection near tidal headland-wakes	2	371
7	101	Arctic	Mammals	Cynthia Christman, Amelia Brower, Jane Clarke, Megan Ferguson, Stephanie Grassia, Amy Kennedy, Brenda Rone, and Rebecca Shea	Aerial observations of Pacific walrus (<i>Odobenus rosmarus divergens</i>) in the northeastern Chukchi Sea, summer and fall 2011	1	
7	103	Arctic	Mammals	Janet Clarke, Megan Ferguson, Cynthia Christman, Amelia Brower, Stephanie Grassia, Rebecca Shea, Brenda Rone, Amy Kennedy	Distribution and relative abundance of belugas (<i>Delphinapterus leucas</i>) in the Alaskan Arctic, summer and fall, 2011	1	
17	243	Gulf of Alaska	Mammals	Lucero Correa, Lorrie D. Rea, Camilla Lieske, J. Margaret Castellini, Brian S. Fadely, and Todd M. O'Hara	Mercury in blood and keratinous tissue of piscivorous mammals	2	370
2	24	Gulf of Alaska	Fish and Fish Habitat	Keith Cox, Johanna Vollenweider, Ron Heintz, Paul Hershberger, Jacob Gregg, and Wyatt Fournier	Failures of bioenergetic models to accurately predict mass loss in fasting Pacific herring (<i>Clupea pallasii</i>)	1	
2	26	Gulf of Alaska	Fish and Fish Habitat	Keith Cox	Check it out!! It's really simple and cool: Calculating basal metabolic rates (BMR) in Pacific herring (<i>Clupea pallasii</i>) using simple first derivatives and integration calculus functions	1	
13	195	Gulf of Alaska IERP	Lower Trophic Levels	Kenneth Coyle, Georgina Gibson	Processes controlling on-shelf transport of <i>Neocalanus</i> populations in the northern Gulf of Alaska.	2	
7	105	Arctic	Mammals	Jessica Crance, Catherine Berchok, Brenda Rone, Amy Kennedy, Elizabeth Küsel, Laura Morse, Jessica Thompson, and Phillip Clapham	Short-term trends in the summer distribution of cetaceans in the Chukchi Sea	1	
8	107	Arctic	Mammals	Justin A. Crawford, Willard Neakok, Mark A. Nelson, Joel Garlich-Miller, and Lori Quakenbush	Results from village-based walrus studies in Alaska, 2011	1	
8	109	Arctic	Mammals	Brendan Cummings and Rebecca Noblin	Polar bear recovery planning: Reconciling Endangered Species Act requirements with the reality of a rapidly melting Arctic	1	
8	111	Arctic	Mammals	Shawn P. Dahle, Michael F. Cameron, Peter L. Boveng	Will global warming result in habitat gains for ice-breeding bearded seals?	1	
11	155	Arctic	Ecosystem Perspectives	Douglas Dasher, Stephen Jewett, Brenda Norcross, and Tawna Morgan	Alaska Monitoring and Assessment Program (AKMAP): Preliminary findings from the coastal northeastern Chukchi Sea, 2010–2011	1	
8	113	Arctic	Mammals	Julien Delarue, Bruce Martin, Xavier Mouy, and David Hannay	Acoustic detections of bowhead whales in the northeastern Chukchi Sea, September 2007 to July 2011	1	
5	65	Gulf of Alaska	Lower Trophic Levels	Raphaelle Descoteaux, Sarah Mincks Hardy, Katrin Iken, and Jeremy Mathis	Effects of ocean acidification on larval development in Alaskan crabs	1	301
10	143	Bering Sea	Mammals	Bobette R. Dickerson, James R. Thomason, and J. Ward Testa	Using telomere length to age northern fur seals, <i>Callorhinus ursinus</i> , from the Pribilof Islands, Alaska	1	
4	48	Arctic	Lower Trophic Levels	Lauren M. Divine, Katrin Iken, and Bodil A. Bluhm	Fitting snow crabs into benthic food webs in the central Alaskan Beaufort Sea	1	117

ALPHABETICALLY SORTED

Row Poster		ALPHABETICALLY SORTED				Wave Student	
#	#	LME	Section	Authors	Title	#	Judging #
5	66	Gulf of Alaska	Lower Trophic Levels	Ayla Doubleday and Russell Hopcroft	Decadal estimates of productivity by pteropods and larvaceans in the coastal Gulf of Alaska	1	64
16	232	Bering Sea	Seabirds	Gary S. Drew, Christopher F. Waythomas, Jeff Williams, and John F. Piatt	Erosion mitigated recovery of Kasatochi Island nesting areas, 2008-2011	1	
13	187	Gulf of Alaska	Ecosystem Perspectives - ICIEMAP	William B. Driskell and James R. Payne	Integrated Cook Inlet Environmental Monitoring and Assessment Program (ICIEMAP): Hydrocarbon fingerprinting	2	
4	54	Bering Sea	Lower Trophic Levels	David Drumm and James W. Orr	Marine macroinvertebrates of Alaska: Annotated checklist	1	
2	28	Gulf of Alaska	Fish and Fish Habitat	Danielle Duncan and Mark Carls	Are creosote pilings a hazard to herring embryos?	1	331
6	84	Gulf of Alaska	Humans	Ian Dutton, Janet Klein, Karen Cain, Rebekka Federer, Ricky Deel, Hillary LeBail, Joseph Hunt, and Casey Schulke	Generating an oral history of habitat use by Cook Inlet belugas in waters of the Kenai Peninsula Borough	1	
18	251	Gulf of Alaska	Mammals	Bonnie Easley-Appleyard, Lori Polasek, Tamara McGuire, and Ian Dutton	Cook Inlet beluga whale behavioral observations via video-monitoring	1	
11	162	Bering Sea	Ecosystem Perspectives	Robin A. Dublin, Ray Barnhardt, Ember Eck, China Kantner, Molly Adams and Jady Edwardsen-Harrington	Igniting scientific inquiry in Alaska Native and rural students through Ocean Science Fair participation	2	172
15	216	Bering Sea	Climate and Oceanography	Lisa Eisner and Kristin Cieciel	Integrated primary production in the eastern Bering Sea during late summer/early fall	2	
14	206	Arctic	Climate and Oceanography	Li Erikson, Ann E. Gibbs, Bruce Richmond, and Benjamin M. Jones	Climate change impacts on storm surge levels affecting habitats within a barrier-island lagoon system in eastern Arctic Alaska	1	
18	253	Gulf of Alaska	Mammals	Tal Ezer	A study of the environmental and physical factors that influence the movement and survival of beluga whales in Cook Inlet, Alaska	1	
2	30	Gulf of Alaska	Fish and Fish Habitat	Thomas Farrugia and Andrew Seitz	An interdisciplinary sustainability assessment of the skate fishery in Prince William Sound, Alaska: Movement patterns, stock assessment and bioeconomic modeling	1	329
11	170	Gulf of Alaska	Ecosystem Perspectives	Leah Feinberg and William Peterson	Fecundity of the euphausiid <i>Euphausia pacifica</i> from the North Pacific with a focus on the northern California current and the Gulf of Alaska	1	
8	114	Arctic	Mammals	Megan Ferguson, Janet Clarke, Amelia Brower, Cynthia Christman, Stephanie Grassia, Amy Kennedy, Brenda Rone, and Rebecca Shea	Bowhead whale (<i>Balaena mysticetus</i>) distribution and relative abundance in the Alaskan Arctic, summer and autumn, 2011	1	
18	255	Gulf of Alaska	Mammals	Dagmar Fertl, Aude Pacini, Michael E. Richlen, Gregory L. Fulling, and Keri C. Lestyk	First noise measurements of an oscillator system for drilled shafts: Its implications for the endangered Cook Inlet beluga whale (<i>Delphinapterus leucas</i>)	1	
2	32	Gulf of Alaska	Fish and Fish Habitat	Wyatt Fournier and Jamal Moss	Regional and seasonal food habits of adult salmon in the Gulf of Alaska and implications for mortality of Age-0 marine fish	1	
16	224	Gulf of Alaska	Climate and Oceanography	Robert Foy, W. Christopher Long, and Katherine Swiney	The effects of ocean acidification on maternal condition and reproductive success and larval condition and survival of Tanner crabs, <i>Chionoecetes bairdi</i> .	1	

ALPHABETICALLY SORTED

Row Poster						Wave Student	
#	#	LME	Section	Authors	Title	#	Judging #
18	257	Gulf of Alaska	Mammals	Elizabeth R. Frame, Preston S. Kendrick, and Kathi A. Lefebvre	Algal toxins in Alaskan marine mammals: Assessing current and emerging exposure threats	1	
9	134	Bering Sea	Mammals	Nancy A. Friday, Alexandre N. Zerbini, Janice M. Waite, Sue E. Moore, and Phillip J. Clapham	Cetacean distribution and abundance in relation to oceanographic domains on the Eastern Bering Sea shelf in June and July of 2002, 2008, and 2010	1	
13	188	Gulf of Alaska	Ecosystem Perspectives - ICIEMAP	Allan K. Fukuyama, Gary Gillingham, and S. Ian Hartwell	Integrated Cook Inlet Environmental Monitoring and Assessment Program (ICIEMAP): Benthic infaunal communities	2	
8	115	Arctic	Mammals	Joel Garlich-Miller, Willard Neakok, Patrick Lemons, Justin Crawford, Kathy Burek, and Raphaela Stimmelmayer	Mortality of walrus at a coastal haulout, Point Lay, Alaska, autumn 2011	1	
18	259	Gulf of Alaska	Mammals	Gretchen L. Geiger, Shannon Atkinson, Gail M. Blundell, James R. Carpenter, Jason Waite, and Kate Wynne	Evaluation of diet composition and plane of nutrition of free-ranging harbor seals (<i>Phoca vitulina</i>) in warm and cool climatic periods	1	350
4	56	Bering Sea	Lower Trophic Levels	Laura Gemery, Lee Cooper, and Thomas Cronin	Benthic ostracode assemblages in the Bering and Chukchi seas from 1976 to 2010	1	
11	156	Arctic	Ecosystem Perspectives	Ann E. Gibbs, Bruce M. Richmond, and Li Erikson	Regional shoreline change studies, North Slope coast of Alaska	2	91
4	58	Bering Sea	Lower Trophic Levels	Georgina Gibson, Kenneth Coyle, Kate Hedstrom, and Enrique Curchitser	Processes controlling the on-shelf transport of oceanic mesozooplankton populations in the eastern Bering Sea	1	
12	171	Gulf of Alaska	Ecosystem Perspectives	Jessica R. Glass and Ginny L. Eckert	Marine Ecosystem Sustainability IGERT: Interdisciplinary Graduate Education in Alaska	2	269
19	261	Gulf of Alaska	Mammals	Caroline E. C. Goertz, Pam Tuomi, Jane Belovarac, and Robert Walton	Serological survey of <i>Leptosporosis</i> in stranded marine mammals in Alaska	1	
12	172	Gulf of Alaska	Ecosystem Perspectives	Philip Goldstein and Mark Fornwall	OBIS-USA: Ocean Biogeographic Information System - Technology, data, standards and applications	1	
4	53	Bering Sea	Lower Trophic Levels	Rolf Gradinger, Bodil Bluhm, and Katrin Iken	Sedimentation processes under the seasonal sea ice of the Bering Sea	2	
3	34	Gulf of Alaska	Fish and Fish Habitat	Stewart Grant	Deep and shallow genetic structure among red king crab populations in Alaska	1	
8	117	Arctic	Mammals	Stephanie Laurel Grassia, Catherine L. Berchok, and Phillip J. Clapham	Interannual temporal and spatial distribution of bowhead whales in the western Alaskan Beaufort Sea; 2007-2010	1	
1	5	Bering Sea	Fish and Fish Habitat	Jacob Gregg, Frank Morado, Claude Dykstra, Barbi Failor, Carolyn Friedman, Brad Harris, Maureen Purcell, and Paul Hershberger	Prevalence and phylogenetic analysis of the parasite <i>Ichthyophonus</i> from several marine fish hosts in the NE Pacific	1	
12	174	Gulf of Alaska	Ecosystem Perspectives	Jim Griswold, Thomas Dean, Heather Coletti, Shay Howlin, James Bodkin, Kimberly Kloecker, and Brenda Ballachey	Sample size, statistical power estimation and potential implications for a long-term marine nearshore monitoring program	1	
4	47	Arctic	Lower Trophic Levels	Marissa Hajduk and Arny Blanchard	Temporal trends of benthic fauna in the northeastern Chukchi Sea, 2008-2010	2	118
1	7	Bering Sea	Fish and Fish Habitat	Alexis Marie Hall	Relationship among groundfish, crabs, and trawling in the Bering Sea	1	207
15	222	Gulf of Alaska	Climate and Oceanography	Mark Halverson	Seasonal exchange between Prince William Sound and the Gulf of Alaska	1	

ALPHABETICALLY SORTED

Row #	Poster #	LME	Section	Authors	Title	Wave #	Student Judging #
12	176	Gulf of Alaska	Ecosystem Perspectives	Courtney Helen Hann	Sunflower sea star (<i>Pycnopodia helianthoides</i>) feeding behavior at sea otter pits	1	267
19	263	Gulf of Alaska	Mammals	Brad Hanson, Marilyn Dahlheim, Daniel Webster, Candice Emmons, Greg Schorr, and Russ Andrews	How "resident" are resident-type killer whales in Alaska? New data show both localized and widespread movements	1	
4	44	Arctic	Lower Trophic Levels	Sarah Mincks Hardy, Michael Lindgren, and Falk Huettmann	Predicting the distribution and ecological niche of unexploited snow crab (<i>Chionoecetes opilio</i>) populations in Alaskan waters: A first open-access ensemble model	2	
12	178	Gulf of Alaska	Ecosystem Perspectives	Cindy A. E. Hartmann Moore, Steve G. Lewis, Mary C. Morris, John R. Harper, Mandy R. Lindeberg, Susan M. Saupe, and Norman A. Cohan	Status of ShoreZone Mapping in Alaska and in the Pacific Northwest	1	
13	189	Gulf of Alaska	Ecosystem Perspectives - ICIEMAP	S. Ian Hartwell, Douglas Dasher, Larry Clafin, and Ed Johnson	Sediment quality triad assessment in Kachemak Bay and Kenai Peninsula: Characterization of soft bottom benthic habitats and contaminant bioeffects assessment	2	
6	78	Bering Sea	Humans	Alan Haynie and Lisa Pfeiffer	Climate change and fisher location choice in the Pacific cod longline fishery	1	
14	207	Arctic	Climate and Oceanography	Kate Hedstrom, Enrique Curchitser, Tom Weingartner, and Seth Danielson	Coupled sea-ice/ocean numerical simulations of the Chukchi and Beaufort Seas	1	
1	9	Bering Sea	Fish and Fish Habitat	Ron Heintz, Elizabeth Siddon, and Ed Farley	Climate related changes in the nutritional condition of young-of-the-year pollock from the eastern Bering Sea	1	
15	217	Bering Sea	Climate and Oceanography	Albert J. Hermann, Georgina A. Gibson, Nicholas A. Bond, Enrique N. Curchitser, Kate Hedstrom, Wei Cheng, Muyin Wang, Phyllis Stabeno, Lisa Eisner, Markus Janout, Kerim Aydin, and Ivonne Ortiz	A multivariate analysis of observed and modeled biophysical variability on the Bering Sea shelf: Multidecadal hindcasts (1969-2009) and forecasts (2010-2040)	2	
16	225	Gulf of Alaska	Climate and Oceanography	Albert J. Hermann, Carol Ladd, Wei Cheng, Enrique N. Curchitser, and Kate Hedstrom	Sources and patterns of interannual oceanic variability of in the Gulf of Alaska	1	
8	118	Arctic	Mammals	Jason K. Herreman, David Douglas, and Lori Quakenbush	Movement and haulout behavior of ringed seals during the 2011 open water season	1	
8	119	Arctic	Mammals	Jason Herreman, Ross Burgener, Joe Skin, Robert Sarren, Cydd Hanns, Kathy Burek, Ole Nielsen, Stephen Raverty, and Raphaela Stimmelmayer	Preliminary result on the spatial distribution and clinical presentation of an emerging disease syndrome in ringed seals of the Arctic Ocean	1	
3	36	Gulf of Alaska	Fish and Fish Habitat	Paul K. Hershberger, Jacob L. Gregg, Steve Moffitt, Rich Brenner, Kyle Garver, Jan Lovy, Johanna J. Vollenweider, and Ted Meyers	Epizootiological observations from five years of Ichthyophonus monitoring in Pacific herring populations	1	
12	179	Gulf of Alaska	Ecosystem Perspectives	Kyle R. Hogrefe and David H. Ward	Refined remote sensing technique and field survey data improve mapping of eelgrass distribution from satellite imagery	1	
16	226	Gulf of Alaska	Climate and Oceanography	Kris Holderied, Danielle Claar, Jennifer Thomas, and Robert Skoumal	Oceanographic variability in Kachemak Bay, Alaska	2	
5	70	Arctic	Humans	Amy Holman	NOAA-Shell/ConocoPhillips/Statoil Data Sharing Memorandum of Agreement	1	

ALPHABETICALLY SORTED

Row #	Poster #	LME	Section	Authors	Title	Wave #	Student Judging #
5	71	Arctic	Humans	Amy Holman and Jackie Kramer	National Ocean Council Arctic Strategic Action Plan	1	
11	163	Bering Sea	Ecosystem Perspectives	Kirstin K. Holsman, Kerim Aydin, Jim Ianelli	Incorporating bioenergetics into multi-species statistical catch-at-age models: An example from the Bering Sea	1	
12	180	Gulf of Alaska	Ecosystem Perspectives	Dominic Hondolero, Kristine Holderied, and Matthew Edwards	Physical and biological characteristics of kelp forests in Kachemak Bay, Alaska	1	
13	196	Gulf of Alaska IERP	Lower Trophic Levels	Russ Hopcroft, Miriam Doyle, Ann Matarese, Calvin Mordy, Jeff Napp, Phyllis Stabeno, Suzanne Strom	A broad-scale look at physics through plankton in the coastal Gulf of Alaska	2	
19	265	Gulf of Alaska	Mammals	Markus Horning and Jo-Ann Mellish	Are western Steller sea lions caught in a predation-driven productivity pit?	1	
19	266	Gulf of Alaska	Mammals	Markus Horning and Jo-Ann Mellish	Autopsy from space: Do sleeper sharks prey on live Steller sea lions?	1	
8	120	Arctic	Mammals	Larissa Horstmann-Dehn, Craig George, Gay Sheffield, and Mark Baumgartner	Bowhead whale feeding efficiency – Making a living in the Arctic	1	
3	38	Gulf of Alaska	Fish and Fish Habitat	Jon P. Houghton, James E. Starks, Jason P. Stutes, and Michelle A. Havey	Seasonal fish use of nearshore habitats in southwestern Cook Inlet	1	
17	238	Gulf of Alaska	Seabirds	Bobby Hsu, Mary Anne Bishop, Kathy Kuletz, and Richard Thorne	Linking hydroacoustic surveys for juvenile herring with winter seabird distribution in Prince William Sound	1	
12	181	Gulf of Alaska	Ecosystem Perspectives	Emily Hutchinson and Keith Criddle	Sustainable Ecosystem-Based Management of Living Marine Resources (SELMR)	2	271
5	67	Gulf of Alaska	Lower Trophic Levels	Katrin Iken and Brenda Konar	Rhodolith habitat in Prince William Sound	1	
6	79	Bering Sea	Humans	Phillip A. Zavadil, Bruce W. Robson, and Stephen J. Insley	Online community based ecological monitoring in the Bering Sea	2	
19	268	Gulf of Alaska	Mammals	John Jansen, Jay Ver Hoef, Gavin Brady, Shawn Dahle and Peter Boveng	Estimating productivity and pup growth using aerial imagery of harbor seals on ice	1	
8	121	Arctic	Mammals	Chadwick V. Jay, Anthony S. Fischbach, and Anatoly A. Kochnev	Walrus foraging areas in the Chukchi Sea during years of scarce summer sea ice	1	
19	269	Gulf of Alaska	Mammals	Lauri A. Jemison, Grey W. Pendleton, Lowell W. Fritz, Rod G. Towell, and Kelly K. Hastings	Inter-population movements of Steller sea lions in Alaska	2	
17	245	Gulf of Alaska	Mammals	Justin Jenniges, Robert J. Small, Manuel Castellote, Marc O. Lammers, Shannon Atkinson, Chris Garner, Anne Rosinski, Delmar Westerholt, Sue Moore, and Whitlow W. L. Au	Monitoring seasonal distribution of Cook Inlet beluga whales with passive acoustic technology	2	
16	234	Bering Sea	Seabirds	Annie F. Johns, Julia Parrish, Jane Dolliver, Shanno Fitzgerald, and Annie Woods	Return of the Short-tailed Albatross	1	215
13	194	Gulf of Alaska IERP	Climate and Oceanography	Nancy B Kachel, Ana M Aguillar-Islas, Calvin W Mordy, Sigrid A Salo, Phyllis Stabeno, Suzanne Strom	Alongshelf differences in hydrography and currents in the Gulf of Alaska	2	
16	235	Bering Sea	Seabirds	Robb S.A. Kaler, Leah A. Kenney, Jeff C. Williams, John Piatt, and Ellen Lance	Breeding ecology of Kittlitz's Murrelet at Agattu Island, Aleutian Archipelago, Alaska: 2011 progress report	2	

ALPHABETICALLY SORTED

Row #	Poster #	LME	Section	Authors	Title	Wave #	Student Judging #
17	247	Gulf of Alaska	Mammals	Shawna A. Karpovich, Jeff Mondragon, Grey W. Pendleton, and Gail M. Blundell	Paired heart rate and dive data for 46 consecutive days on a free-ranging harbor seal (<i>Phoca vitulina</i>)	2	
16	233	Bering Sea	Seabirds	Leah A. Kenney and Robb S. A. Kaler	Identifying nesting habitat of <i>Brachyramphus murrelets</i> : Old nests lead to a new breeding record	2	216
18	250	Gulf of Alaska	Mammals	Mandy J. Keogh, Shannon Atkinson, and John M. Maniscalco	Effects of hot-iron branding on the endocrine and immune profiles of Steller sea lion (<i>Eumetopias jubatus</i>) pups	2	
9	135	Bering Sea	Mammals	Ryan Kingsbery and Leslie Cornick	Northern fur seal (<i>Callorhinus ursinus</i>) pup entanglement before and after marine debris beach cleanups on St. George Island, Alaska	2	241
2	21	Gulf of Alaska	Fish and Fish Habitat	Michael Kohan, Megan McPhee, Joe Orsi, Phil Mundy, and Franz Mueter	How biophysical dynamics predict differences in juvenile chum salmon (<i>Oncorhynchus keta</i>) physiology	2	332
11	157	Arctic	Ecosystem Perspectives	Brenda Konar	Recovery in high arctic kelp communities	1	
8	122	Arctic	Mammals	William R. Koski, John R. Brandon, Darren S. Ireland, Dale W. Funk, M. Reiser Craig, and A. Michael Macrander	Do bowhead whales avoid sound pressure levels of 120 dB re 1 μ Pa (rms) from seismic surveys during fall migration?	1	
3	40	Gulf of Alaska	Fish and Fish Habitat	Ryan P. Kovach, John Joyce, and David A. Tallmon	Climate induced changes in the phenology and evolutionary potential of multiple salmonid species	1	
9	136	Bering Sea	Mammals	Declined	Declined		228
9	137	Bering Sea	Mammals	Erin Kunisch, Markus Horning, and Tom Gelatt	Reproductive timing and median dates of birth of northern fur seals in 2008 and 2009	2	240
9	138	Bering Sea	Mammals	Tetiana A. Kuzmina, Eugene T. Lyons, and Terry R. Spraker	Anisakids (Nematoda: Anisakidae) from stomachs of the northern fur seals (<i>Callorhinus ursinus Linnaeus</i> , 1758) in St. Paul island, Alaska: Current state of parasite situation	2	
10	139	Bering Sea	Mammals	Tetiana A. Kuzmina, Eugene T. Lyons, Terry R. Spraker, and Tom Gelatt	<i>Dipetalonema odendhali</i> (Nematoda: Filarioidae) from northern fur seals (<i>Callorhinus ursinus Linnaeus</i> , 1758) in St. Paul island, Alaska	2	
6	85	Gulf of Alaska	Humans	Gunnar Lauenstein, Jeff Hetrick, John Davenport, and Dennis Apeti	Assessment of contaminant levels in subsistence shellfish from Resurrection Bay, AK: An interspecies comparison	1	
17	240	Gulf of Alaska	Seabirds	James Lawonn, Daniel D. Roby, John F. Piatt, Robin Corcoran, and Bill Pyle	Kittlitz's Murrelets nesting in unglaciated alpine habitat on Kodiak Island, Alaska: Unraveling parts of the mystery	1	336
6	86	Gulf of Alaska	Humans	Hillary LeBail, Ian Dutton, and Joseph Hunt	Public perception of climate change and its impact on Alaska's marine ecosystems	1	
5	68	Gulf of Alaska	Lower Trophic Levels	Dennis C. Lees, Christopher J. Hein and Emily A. Carruthers	Status of hard-shell clam assemblages in organized coarse-grained sediments in western Prince William Sound – A preliminary report	1	
7	100	Arctic	Mammals	Patrick R. Lemons and Cynthia Christman	Pacific walrus (<i>Odobenus rosmarus divergens</i>) abundance and use of the northeast Chukchi Sea based on COMIDA aerial surveys	2	
12	182	Gulf of Alaska	Ecosystem Perspectives	Mandy Lindeberg and Steve Lewis	Alaska ShoreZone Online – a web enabled GIS database	1	
5	60	Gulf of Alaska	Lower Trophic Levels	Wayne Litaker, Kate Sullivan, Mark Vandersea, Steve Kibler, Megan Nepshinsky, Greg Zychowski, and Patricia Tester	Hands-on workshop to identify toxic <i>Alexandrium</i> species using qPCR methods	2	

ALPHABETICALLY SORTED

Row #		Poster #		LME	Section	Authors	Title	Wave #	Student Judging #
#	#	#	#						
6	87	Gulf of Alaska	Humans	Rachel Lord	Alaska clean harbors: Reducing pollution at Alaska's harbors and marinas	2			
14	209	Arctic	Climate and Oceanography	Vladimir Luchin and Gleb Panteleev	Ocean waves conditions in the Chukchi Sea from satellite and in situ observations: Necessity for the observations and numerical modeling	1			
3	41	Gulf of Alaska	Fish and Fish Habitat	Sarah Lyon, Jacqueline Patt, Jon Heifetz, Thomas Weingartner, and Anthony J. Gharrett	Preliminary evaluation of fine-scale population genetic structure of northeastern Gulf of Alaska Pacific ocean perch	1			
9	126	Bering Sea	Mammals	Eugene T. Lyons, Tetiana A. Kuzmina, Terry R. Spraker, and Tom Gelatt	Biology and prevalence of the hookworm (<i>Uncinaria lucasi</i> Stiles, 1901) in northern fur seals (<i>Callorhinus ursinus</i> Linnaeus, 1758) on St. Paul Island, Alaska	2			
7	92	Arctic	Mammals	Nadine Stewart Lysiak, Mark Baumgartner, and J. Craig George	Correlating shifting baselines in the Arctic to long-term bowhead whale isotope records	2			
7	94	Arctic	Mammals	James (Jim) G. MacCracken, Joel Garlich-Miller, and Jonathan Snyder	Pacific walrus and climate change: Observations and predictions	2			
7	102	Arctic	Mammals	Kalyn Q. MacIntyre, Kathleen M. Stafford, Catherine L. Berchok, and Peter L. Boveng	Year-round passive acoustic monitoring of bearded seal vocalizations at three locations in the Beaufort Sea, 2008-2010	2	163		
1	11	Bering Sea	Fish and Fish Habitat	Steve A. MacLean, John Gruver, John Gauvin, and Jena Carter	Development and efficacy of a Chinook salmon excluder device in the Bering Sea pollock trawl fishery	1			
6	88	Gulf of Alaska	Humans	Leila Madge, Edward Glazier, and Laura Stanley	Socioeconomic assessment of major oil spill litigation and settlement	2			
14	210	Arctic	Climate and Oceanography	Andy R. Mahoney, Hajo Eicken, Lewis Shapiro, and Allison Graves Gaylord	Lead and landfast sea ice patterns in the Chukchi and Beaufort seas over the past two decades	1			
1	3	Arctic	Fish and Fish Habitat	Andy Majewski, Jim Reist, and Lisa Loseto	Fisheries research in support of Fisheries and Oceans Canada's regulatory role in hydrocarbon development in the Canadian Beaufort Sea	1			
1	4	Arctic	Fish and Fish Habitat	Andy Majewski, Brittany Lynn, Jim Reist, and Mark Lowdon	Community composition of demersal marine fishes in the Canadian Beaufort Sea	2			
11	158	Arctic	Ecosystem Perspectives	Philip D. Martin, Benjamin M. Jones, and Li H. Erikson	Arctic Landscape Conservation Cooperative coastal process studies	2			
18	252	Gulf of Alaska	Mammals	Craig O. Matkin, Russel D. Andrews, Eva Saulitis, and Graeme Ellis	Expanding perspectives, investigating pod specific killer whale habitat with ARGOS satellite telemetry	2			
6	89	Gulf of Alaska	Humans	Erica L. McCall Valentine, William E. Simeone, Marie Lowe, Liliana Naves, Gloria Stickwan, and James Brady	Cultural models of Copper River salmon biology	2			
18	254	Gulf of Alaska	Mammals	Brett T. McClintock	A general modelling framework for animal movement and migration using multi-state random walks	2			
11	159	Arctic	Ecosystem Perspectives	Heather J. McEachen, Stephen R. Okkonen, and Russell R. Hopcroft	Measuring arctic zooplankton advection in the Bering and Chukchi Seas	1	90		
12	183	Gulf of Alaska	Ecosystem Perspectives	Laurel McFadden, Rob Campbell, Douglas Causey, and Jeffery Welker	Distribution and ecology of zooplankton and juvenile pelagic fishes in the Copper River plume	1	268		
19	270	Gulf of Alaska	Mammals	Tamara McGuire, Megan Blees, and Marc Bourdon	What can individual Cook Inlet beluga whales tell us about the habitat use of the population and exposure to potential threats?	1			

ALPHABETICALLY SORTED

Row #	Poster #	LME	Section	Authors	Title	Wave #	Student Judging #
12	184	Gulf of Alaska	Ecosystem Perspectives	Alan J. Mearns, David Janka, Mandy Lindeberg and John Whitney	Overview and twenty-two year update of shoreline biological observations in Prince Williams Sound	2	
2	23	Gulf of Alaska	Fish and Fish Habitat	Katharine Miller, Brenda Norcross, Falk Huettmann, and Mitch Lorez	Application of machine learning models to predict fish species distributions in Alaskan estuaries	2	
7	96	Arctic	Mammals	Julie A. Mocklin, Linda Vate Brattström, Kim E. W. Shelden, Kimberly T. Goetz, and David J. Rugh	Results from five years of aerial surveys during the Bowhead Whale Feeding Ecology Study (BOWFEST) off Barrow, Alaska	2	
5	69	Arctic	Humans	Katie Moerlein, Courtney Carothers, and Andres Lopez	Observations and implications of climate change in subsistence fishing communities in northwest Alaska	2	98
7	104	Arctic	Mammals	Anneliese Moll, Michael Mahoney, Josh Jones, Ian Sia, Malorie Johnson, Sean Wiggins, and John Hildebrand	Seasonal presence and acoustic behavior of beluga whales (<i>Delphinapterus leucas</i>) north of Point Barrow, Alaska	2	162
7	106	Arctic	Mammals	Daniel Monson and Chadwick Jay	Estimating the age composition of Pacific walrus herds on shore haul-outs from gyro-stabilized, high definition videography	2	
19	267	Gulf of Alaska	Mammals	John R. Moran, Stanley D. Rice, Janice M. Straley, Kevin M. Boswell, and Ron A. Heintz	Significance of whale predation on natural mortality rate of Pacific herring	2	
4	55	Bering Sea	Lower Trophic Levels	Calvin W. Mordy and Michael Lomas	The impact of sea-ice on bottom-up and top-down controls of crustacean zooplankton and the mediation of carbon and energy flow in the eastern Bering Sea	2	
16	231	Arctic	Seabirds	Tawna Morgan, Robert H. Day, Stephen S. Jewett, and Doug H. Dasher	Monitoring marine birds in the nearshore Chukchi Sea: Preliminary findings from the AKMAP Program in the coastal northeastern Chukchi Sea, 2010–2011	2	
13	197	Gulf of Alaska IERP	Fish and Fish Habitat	Jamal Moss, Wyatt Fournier, Kalei Shotwell	The Gulf of Alaska Project upper trophic level: Preliminary findings from the first field season	2	
13	198	Gulf of Alaska IERP	Ecosystem Perspectives	Franz J. Mueter, Miriam J. Doyle, Jason N. Waite, S. Kalei Shotwell, Kimberly M. Rand, Sarah Hinckley	Gulf of Alaska IERP Retrospective Data Project	2	
4	49	Arctic	Lower Trophic Levels	Jeffrey Napp, Adam Spear, and Phyllis Stabeno	Acoustic detection of zooplankton in the Chukchi Sea	2	
2	25	Gulf of Alaska	Fish and Fish Habitat	Bonita Nelson	Estimated metabolic costs associated with locomotion in Pacific herring (<i>Clupea pallasii</i>)	2	
8	108	Arctic	Mammals	Mark A. Nelson, John Goodwin, and Lori Quakenbush	Subsistence harvest records for ice seals in Alaska, 1960–2010	2	
1	6	Bering Sea	Fish and Fish Habitat	Krista Nichols, Lara Horstmann-Dehn, Suman Maity, Alexandra DeWitt, and Maria Sepulveda	Disease prevalence and links to metabolic condition in Chinook salmon during the marine migration phase	2	
3	42	Gulf of Alaska	Fish and Fish Habitat	Julie Nielsen and Andrew Seitz	Geolocation of demersal fishes in Alaska using geomagnetic archival tags	1	330
1	2	Arctic	Fish and Fish Habitat	Brenda Norcross, Brenda Holladay, Christine Gleason	Length-weight-age relationships of demersal fishes in the Chukchi Sea	2	
9	128	Bering Sea	Mammals	Shawn R. Noren, Mark S. Udevitz, and Chadwick V. Jay	Bioenergetics model for estimating food requirements of female Pacific walrus (<i>Odobenus rosmarus divergens</i>)	2	

ALPHABETICALLY SORTED

Row #		Poster #	LME	Section	Authors	Title	Wave #	Student Judging #
12	185	Gulf of Alaska	Ecosystem Perspectives	Stephanie Norman, Woutrina Miller, Stefan Wuertz, Ann Melli, Michael Maki, Laurel Beckett, Nadira Chouicha, and Roderick Hobbs	Fecal pathogen pollution: Sources and patterns in water and sediment samples from the upper Cook Inlet, Alaska ecosystem	1	248	
11	160	Arctic	Ecosystem Perspectives	Stephen Okkonen, Dixon Jones, Phil Alatalo, Carin Ashjian, Mark Baumgartner, Robert G. Campbell, John Citta, Craig George, Kim Goetz, Wieslaw Maslowski, Julie Mocklin, Dave Rugh, Lori Quakenbush, Kate Stafford, and Linda Vate Brattstrom	A year in the life of the bowhead whale: An educational outreach product in calendar format	2		
17	236	Bering Sea	Seabirds	Rachael A. Orben, Rosana Paredes, Daniel D. Roby, David B. Irons, Richard A. Phillips, and Scott A. Shaffer	Winter migration of Red-legged and Black-legged Kittiwakes from the Pribilof Islands, Alaska	1	214	
14	204	Arctic	Climate and Oceanography	John Calder, James Overland, Carven Scott, and Janet Intrieri	Improvements in Sea Ice Forecasting – Results of a NOAA Workshop	1		
11	165	Bering Sea	Ecosystem Perspectives	Laura E. Oxtoby, Suzanne Budge, Shiway Wang, Lara Horstmann-Dehn, Katrin Iken, Rolf R. Gradinger, and Matthew Wooller	Carbon cycling in the Bering Sea benthos: Gaining insight from fatty acids	1	170	
2	27	Gulf of Alaska	Fish and Fish Habitat	Katie J. Palof, Dana Hanselman, Terrance J. Quinn, and Anthony J. Gharrett	Preliminary evaluation of combining genetics and population dynamics to improve the management of Pacific ocean perch, <i>Sebastes alutus</i>	2	334	
13	199	Gulf of Alaska IERP	Fish and Fish Habitat	Carolina Parada, Sarah Hinckley, William Stockhausen, Georgina Gibson	Eddy identification and transport in the Gulf of Alaska: Links to simulated particle retention and transport patterns	2		
2	29	Gulf of Alaska	Fish and Fish Habitat	Scott Pegau	Factors influencing spatial patterns of overwintering survival of age-0 pacific herring	2		
5	72	Arctic	Humans	Leslie Pierce, John "Craig" George, Cyd Hanns, Jason Herreman, Mike Pederson, Brian Person, Todd Sformo, Robert Suydam, and Taqulik Hepa	From north to north: Outreach and educational opportunities on the North Slope	2		
15	218	Bering Sea	Climate and Oceanography	Alexei I. Pinchuk and Kenneth O. Coyle	Variability in <i>Calanus</i> spp. populations on the eastern Bering Sea shelf during the recent cold phase	2		
18	256	Gulf of Alaska	Mammals	Leigh Pinney, Lori Polasek, Jill Prewitt, and Tamara McGuire	Spatial and temporal distribution of Cook Inlet beluga whales in the Little Susitna River delta	2		
9	130	Bering Sea	Mammals	Lori Polasek	Pacific walrus haulout monitoring: 2011	2		
4	57	Bering Sea	Lower Trophic Levels	Steven Porter and Kevin Bailey	Using muscle cell nuclear RNA to improve condition measurements of walleye pollock, <i>Theragra chalcogramma</i> , larvae using flow cytometry	2		
15	212	Arctic	Climate and Oceanography	Rachel A. Potter, Thomas .J Weingartner, Hank Statscewich, and Peter Winsor	Surface currents in the northeast Chukchi Sea	1		
18	258	Gulf of Alaska	Mammals	Jill S. Prewitt and Lori K. Polasek	Monitoring reproductive hormones in captive adult female Steller sea lions during a breeding program	2		
1	8	Bering Sea	Fish and Fish Habitat	Andre Punt and Cody Szuwalski	How well can surplus production models estimate FMSY and BMSY for crab stocks?	2		
5	74	Arctic	Humans	Julie Raymond-Yakobian	Iqalit traditional knowledge of walrus in the Bering Strait	2		

ALPHABETICALLY SORTED

Row Poster						Wave Student	
#	#	LME	Section	Authors	Title	#	Judging #
9	132	Bering Sea	Mammals	Lorrie Rea, Alison Banks, J. Margaret Castellini, Brian Fadely, and Vladimir Burkanov	Plasma haptoglobin concentrations vary by region of capture in free-ranging Steller sea lion pups	2	
5	62	Gulf of Alaska	Lower Trophic Levels	Charlotte M. Regula-Whitefield and Sarah M. Hardy	Preliminary findings on the effects of maternal diets on egg and early larval development in the California sea cucumber (<i>Parastichopus californicus</i>)	2	302
9	133	Bering Sea	Mammals	Jessica Reiner, Jennifer Keller, Steven O'Connell, John Kucklick, Michele Schantz, Amanda Moors, Rebecca Pugh, and Paul Becker	Retrospective analysis of perfluorinated alkyl acids in marine mammals from Alaska	2	
16	227	Gulf of Alaska	Climate and Oceanography	Stacey Reisdorph, Jeremy T. Mathis, Natalie M. Monacci, Seth Danielson, and Lewis Sharman	The impacts of climate induced deglaciation on ocean acidification in Glacier Bay, Alaska: Insights from a new ocean time-series	1	289
8	110	Arctic	Mammals	Craig M. Reiser, Julien Delarue, Dale W. Funk, Darren S. Ireland, and Danielle M.S. Dickson	Recent visual and acoustic detections of fin and humpback whales in the Alaskan Chukchi Sea	2	
17	237	Bering Sea	Seabirds	Martin Renner and George L. Hunt	Predicting the spatial abundance of marine organisms - which modeling approach is best?	2	
15	219	Bering Sea	Climate and Oceanography	Joel H. Reynolds and Karen Murphy	The Western Alaska Landscape Conservation Cooperative & management information needs regarding terrestrial-marine linkages	2	
1	12	Bering Sea	Fish and Fish Habitat	Jonathan I. Richar, Gordon H. Kruse, Albert J. Hermann, and Enrique N. Curchitser	Spatio-temporal variability in simulated advection patterns of larval Tanner crab in the eastern Bering Sea	2	204
1	13	Bering Sea	Fish and Fish Habitat	Jonathan I. Richar, Gordon H. Kruse, Albert J. Hermann, and Enrique N. Curchitser	Recruitment mechanisms for eastern Bering Sea Tanner crab—a geospatial approach	1	197
10	141	Bering Sea	Mammals	David A. S. Rosen and Andrew W. Trites	Lacka mackerel? Is Atka mackerel “good enough” for Steller sea lions?	2	
17	239	Gulf of Alaska	Seabirds	Jonathan A. Runstadler, Mary Anne Bishop, Michelle Wille, Andrew S. Lang, Florian Aldehoff, Lori A. Gildehaus, and Jennifer Paige Gingrich	Avian influenza surveillance of shorebirds and gulls in Cordova	2	
4	50	Arctic	Lower Trophic Levels	Imme Rutzen, Russell R. Hopcroft, and Falk Huettmann	Predicting pan-arctic zooplankton abundance at the species level	1	112
13	190	Gulf of Alaska	Ecosystem Perspectives - ICIEMAP	Susan M. Saupe, Allan K. Fukuyama, Gary Gillingham, S. Ian Hartwell, Tim L. Robertson, Mark A. Savoie, and John H. Trefrey	Integrated Cook Inlet Environmental Monitoring and Assessment Program (ICIEMAP): A collaboration of four inlet contaminant studies	2	
13	191	Gulf of Alaska	Ecosystem Perspectives - ICIEMAP	Susan M. Saupe, Mark A. Savoie, and Tim L. Robertson	Integrated Cook Inlet Environmental Monitoring and Assessment Program (ICIEMAP): Statistical design, field studies, indices, and analytical parameters	2	
13	192	Gulf of Alaska	Ecosystem Perspectives - ICIEMAP	Mark A. Savoie, Gary Gillingham, and Susan M. Saupe	Integrated Cook Inlet Environmental Monitoring and Assessment Program (ICIEMAP): Distribution patterns and sources for organic contaminants	2	
8	116	Arctic	Mammals	Samantha Schaeffer, Michael Mahoney, and Clarissa Zeller	Seasonal variation of bearded seal (<i>Erignathus barbatus</i>) calls north of Barrow, Alaska during the winter and spring of 2010	2	161
2	31	Gulf of Alaska	Fish and Fish Habitat	Andy Seitz, Seth Danielson, Hank Statscewich, and Peter Winsor	Locating acoustic-tagged fishes and describing their environment using an autonomous underwater vehicle	2	
12	173	Gulf of Alaska	Ecosystem Perspectives	Brendan J. Moynahan and Christopher J. Sergeant	Long-term marine monitoring at National Parks in southeast Alaska	2	

ALPHABETICALLY SORTED

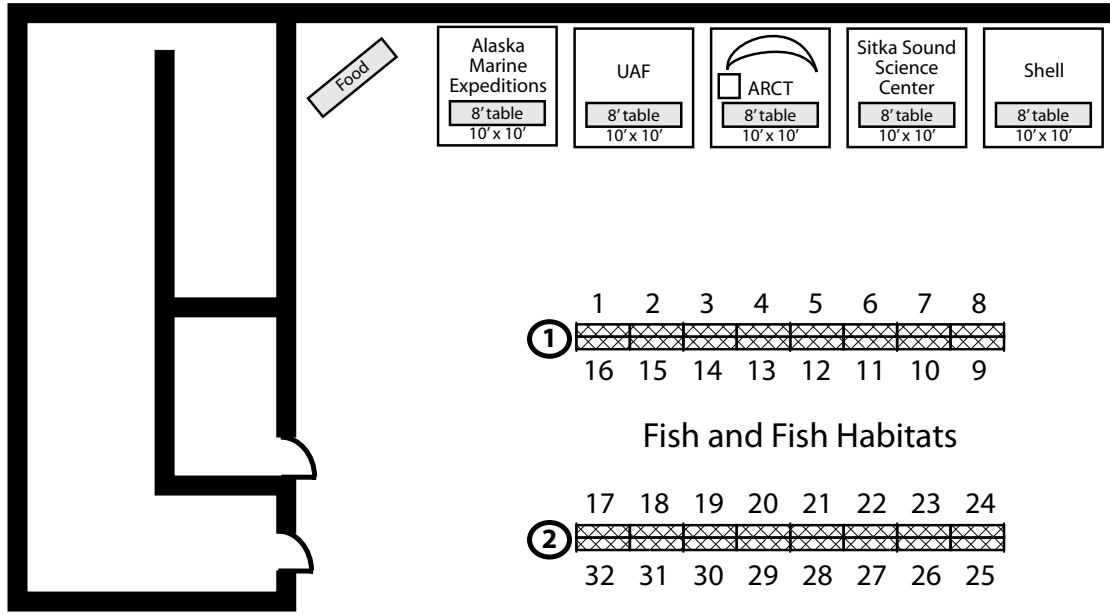
Row #		Poster #	LME	Section	Authors	Title	Wave #	Student Judging #
3	33		Gulf of Alaska	Fish and Fish Habitat	Fletcher Sewall, Ron Heintz, and Johanna Vollenweider	Spatial and interannual variability in growth and body composition over winter in juvenile Pacific herring (<i>Clupea pallasii</i>) from Prince William Sound	2	335
9	123		Arctic	Mammals	Jill-Marie Seymour, Greta M. Krafur, Lara A. Horstmann-Dehn, Laura Oxtoby, Carl Nayakik, Cyd Hanns, and Matthew Wooller	A tail of two tails: Examination and tissues analyses of a seal-eating walrus	1	159
10	142		Bering Sea	Mammals	Gay G. Sheffield and Lauri A. Jemison	Spanning the north Pacific: Steller sea lions at St. Lawrence Is., Nov-Dec 2011	2	
10	151		Arctic	Ecosystem Perspectives	Lisa Sheffield Guy, Sue E. Moore, and Phyllis Stabeno	Synthesis of Arctic Research (SOAR) – Physics to marine mammals in the Pacific arctic	2	
13	200		Gulf of Alaska IERP	Fish and Fish Habitat	S. Kalei Shotwell, Mark Zimmermann, Jane A. Reid, Nadine Golden	The Gulf of Alaska Project upper trophic level benthic habitat research	2	
11	166		Bering Sea	Ecosystem Perspectives	Michael F. Sigler, Thomas I. Van Pelt, and Francis K. Wiese	Road map: Managing outcomes in the ecosystem-scale 'Bering Sea Project' marine research program	2	
1	15		Bering Sea	Fish and Fish Habitat	Kevin Siwicke, Trent M. Sutton, and Andrew C. Seitz	Utilization of attack scars as a proxy for lamprey abundance and distribution in the eastern Bering Sea	1	206
17	241		Gulf of Alaska	Seabirds	Arthur B. Kettle and Leslie Slater	Use of time-lapse photography to monitor Common Murre productivity on Barwell Island	2	
3	43		Gulf of Alaska	Fish and Fish Habitat	Dongwha Sohn, Lorenzo Ciannelli, Janet Duffy-Anderson, and Timothy Loher	Spatial and temporal distributions of Pacific halibut from eggs to larvae in the eastern Bering Sea and the Gulf of Alaska	1	313
5	64		Gulf of Alaska	Lower Trophic Levels	Leandra Sousa, Kenneth Coyle, Thomas Weingartner, and Russel Hopcroft	Climate-related variability in abundance of mesozooplankton in the northern Gulf of Alaska 1998-2009	2	
10	144		Bering Sea	Mammals	Terry R. Spraker, Bobette Dickerson, and Tom Gelatt	Congenital anomalies in northern fur seal pups on St. Paul Island, Alaska from 1986 to 2011	2	
15	220		Bering Sea	Climate and Oceanography	Phyllis Stabeno, Jeffrey M. Napp, Nicholas A. Bond, and Jeremy Mathis	The status of the Bering Sea in 2011: Cool	2	
3	35		Gulf of Alaska	Fish and Fish Habitat	Megan M. Stachura, Nate Mantua, Anne Hollowed, and Ray Hilborn	An investigation of northeast Pacific groundfish recruitment variability driven by the environment	2	333
15	214		Arctic	Climate and Oceanography	Steve Stegall and Jing Zhang	Wind field climatology, changes, and extremes in the Chukchi/Beaufort seas and Alaska North Slope during 1979-2009	2	105
6	90		Gulf of Alaska	Humans	Thomas Stewart, Randy Allen, Sherwood Hall, Wayne Litaker, and Pat Tester	Paralytic Shellfish Poisoning: Preparation of monoclonal antibodies to Saxitoxins for use in PSP detection	2	
1	10		Bering Sea	Fish and Fish Habitat	Laura M. Stichert and Douglas Pengilly	Eastern Bering Sea snow crab: Observations of growth & mating in the laboratory, 2007–2011	2	
13	201		Gulf of Alaska IERP	Ecosystem Perspectives	William T. Stockhausen, Sarah Hinckley, Georgina Gibson, Carolina Parada	Modeling the "Gauntlet" from spawning grounds to juvenile nurseries: individual-based models for the early life stages of 5 focal fish species in the Gulf of Alaska	2	
14	202		Gulf of Alaska IERP	Fish and Fish Habitat	Declined	Declined		
11	164		Bering Sea	Ecosystem Perspectives	Don Stott, James A. Moore, and Steven F. Williams	The Bering Sea Project Data Archive	2	
15	213		Arctic	Climate and Oceanography	Chase Stoudt, Kim Martini, and Harper Simmons	Sea ice response to atmospheric storms	1	104

ALPHABETICALLY SORTED

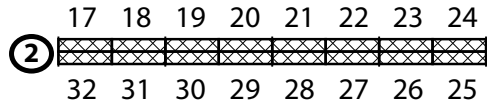
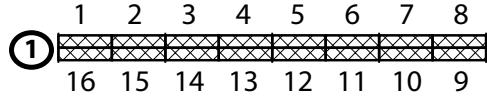
Row #	Poster #	LME	Section	Authors	Title	Wave #	Student Judging #
12	186	Gulf of Alaska	Ecosystem Perspectives	Jan Straley, Victoria O'Connell, Lisa Busch, Pete Raimondi, Melissa Miner, and John Straley	Between Pacific tides: Revisiting historical surveys of Sitka through Ricketts, Calvin and Ahlgren	2	
2	17	Bering Sea	Fish and Fish Habitat	Cody Szuwalski and Andre Punt	Regime shifts and oscillating control of snow crab, <i>Chionoecetes opilio</i> , recruitment in the eastern Bering Sea	1	196
19	260	Gulf of Alaska	Mammals	J. Ward Testa, Kenrick J. Mock, Cameron Taylor, Heather Koyuk, Jessica R. Coyle, and Russell Waggoner	Agent-based modeling of mammal-eating killer whales and their prey: Not your lynx-hare cycle	2	
9	124	Arctic	Mammals	Aaron Thode	Range and depth estimates of bowhead whale calls detected in the Alaskan Beaufort Sea using a vertical array	2	
19	271	Gulf of Alaska	Mammals	Aaron Thode, Sheyna Wisdom, Sasha McFarland, Bridget Watts, Christa Koos, and Randy Martinez	Acoustic monitoring of Cook Inlet using a cabled bottom-mounted array system	2	
19	272	Gulf of Alaska	Mammals	Aaron Thode, Delphine Mathias, Lauren Wild, Janice Straley, Victoria O'Connell, Dan Falvey, Kendall Folkert	Experimental demonstration of passive and acoustic decoys for reducing sperm whale depredation	2	
16	228	Gulf of Alaska	Climate and Oceanography	Katherine Trahanovsky and Terry E. Whitledge	Nutrient dynamics in a productive downwelling system: The coastal Gulf of Alaska 1998-2010	1	284
13	193	Gulf of Alaska	Ecosystem Perspectives - ICIEMAP	John H. Trefry, Robert P. Trocine, and Mark A. Savoie	Integrated Cook Inlet Environmental Monitoring and Assessment Program (ICIEMAP): Distribution patterns and sources for trace metals	2	
10	146	Bering Sea	Mammals	John N. Trent	A chronology of Pacific walrus tusk marking as a management tool	2	
11	167	Bering Sea	Ecosystem Perspectives	Andrew W. Trites, Brian Battaile, Ann Harding, Brian Hoover, David Irons, Nat Jones, Kathy Kuletz, Chad Nordstrom, Rosana Paredes, and Dan Roby	Top predators partition the Bering Sea	2	
4	51	Arctic	Lower Trophic Levels	Kelley Tu and Arny Blanchard	Isotopic food web comparisons of two survey sites in the northeastern Chukchi Sea	2	119
19	262	Gulf of Alaska	Mammals	Pam Tuomi, Caroline E.C. Goertz, Millie Gray, Lynda Leppert, Jane Belovarac, Robert Walton, and JoAnn Mellish	Intestinal and respiratory parasites in juvenile Steller sea lions (<i>Eumatopias jubatus</i>) from Prince William Sound, Alaska	2	
1	14	Bering Sea	Fish and Fish Habitat	Tadayasu Uchiyama, Gordon H. Kruse, and Franz Mueter	Modeling the effect of predation in the eastern Bering Sea fish community	2	208
12	175	Gulf of Alaska	Ecosystem Perspectives	Benjamin Van Alen	The end of life as we know it...and other problems with hatcheries	2	
12	177	Gulf of Alaska	Ecosystem Perspectives	Lawra Vanderhoof and Mark Carls	Southeast Alaska long-term seawater monitoring program for ocean acidification	2	
15	221	Bering Sea	Climate and Oceanography	Cathleen Vestfals, Lorenzo Ciannelli, Janet Duffy-Anderson, and Carol Ladd	Developing eddy activity and transport indices for the Bering slope current	2	181
6	80	Bering Sea	Humans	Hannah Voorhees	A new "knowledge economy": The re-valorization of subsistence hunting techniques for marine mammal monitoring in the arctic	1	179
10	147	Bering Sea	Mammals	Paul R. Wade, John Durban, Holly Fearnbach, David Ellifrit, and Janice Waite	Abundance and prey of mammal-eating killer whales in the Aleutian Islands	2	
1	16	Bering Sea	Fish and Fish Habitat	Robert V. Walker and Heather Wiedenhoft	Condition of Bering Sea Chinook salmon in fall and winter	2	

ALPHABETICALLY SORTED

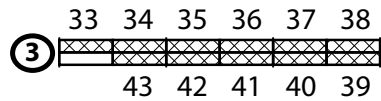
Row Poster						Wave Student	
#	#	LME	Section	Authors	Title	#	Judging #
10	140	Bering Sea	Mammals	Shiway W. Wang, Suzanne M. Budge, Lara Horstmann-Dehn, Lori T. Quakenbush, Alan M. Springer, and Matthew J. Wooller	Foraging patterns of ice seals in Alaska inferred from fatty acid profiles	1	239
16	229	Gulf of Alaska	Climate and Oceanography	Xiaochun Wang, Yi Chao, John Farrara, and C. J. Beegle-Krause	Seasonal cycle simulation for Prince William Sound, Alaska	2	
6	81	Bering Sea	Humans	Janet Warburton	From sea to shore –The benefits of ship-based teacher research experiences	2	
3	37	Gulf of Alaska	Fish and Fish Habitat	Jordan T. Watson, Mary Anne Bishop, Sean P. Powers, Stan Bosarge, and Brad F. Reynolds	Nearshore piscivory during the winter in Prince William Sound	2	
2	19	Bering Sea	Fish and Fish Habitat	Joel Webb, Ginny Eckert, and Gordon Kruse	Are all eggs equal? Maternal effects on embryo quality in the snow crab, <i>Chionoecetes opilio</i>	1	205
8	112	Arctic	Mammals	Jeffrey M. Welker, Matthew O'Dell, Kristin Simac, Matthew Rogers, and Lily Peacock	Isotopic ($\delta^{13}C$, $\delta^{15}N$, $\delta^{34}S$) variation of Beaufort Sea polar bear tissues	2	
14	208	Arctic	Climate and Oceanography	Terry E. Whitledge	R/V Sikuliaq: A new ice-capable resource for research in Alaskan waters	2	
10	153	Arctic	Ecosystem Perspectives	Helen V. Wiggins, Hajo Eicken, and Susan E. Fox	SEARCH: Study of Environmental Arctic Change - A system-scale, cross-disciplinary arctic research program	2	
15	215	Arctic	Climate and Oceanography	Peter Winsor, Thomas Weingartner, Hank Statscewich, Rachel Potter, and Madeline Merck	AUV Glider and HF Radar observations of circulation and stratification features in the Chukchi Sea	1	
6	76	Bering Sea	Humans	Kevin R. Wood and Nancy N. Soreide	Large-scale arctic climate data recovery at the US National Archives	2	
5	73	Arctic	Humans	Shelley Woods, Craig George, and Courtney Carothers	An interdisciplinary description of the Elson Lagoon subsistence fishery	1	97
3	39	Gulf of Alaska	Fish and Fish Habitat	Carrie Worton, David Barnard, Gregg Rosenkranz, and Christian de Moustier	Mapping Tanner crab habitat in the Kodiak Area of the Gulf of Alaska	2	
2	18	Bering Sea	Fish and Fish Habitat	Marilyn Fox Zaleski and Sherry L. Tamone	What does it take to mate? Comparing gonadosomatic index, methyl farnesoate, and shell condition in eastern Bering Sea snow crab <i>Chionoecetes opilio</i>	2	209
10	148	Bering Sea	Mammals	Adam Zaleski, Shannon Atkinson, and Vladimir Burkanov	The effect of organochlorine contaminants on Steller sea lion (<i>Eumetopias jubatus</i>) reproduction and re-sight probability	1	242
19	264	Gulf of Alaska	Mammals	Alexandre N. Zerbini, Marilyn E. Dahlheim, Janice M. Waite, and Amy S. Kennedy	Evaluation of harbor porpoise (<i>Phocoena phocoena</i>) population decline in southeastern Alaska inland waters	2	
14	211	Arctic	Climate and Oceanography	Xiangdong Zhang, Jing Zhang, Jeremy Krieger, Martha Shulski, Fuhong Liu, Steve Stegall, and Wei Tao	High resolution wind field reanalysis over Beaufort-Chukchi seas: Data introduction and regional climate change detection	2	
10	149	Bering Sea	Mammals	Heather Ziel, Josh London, Michael Cameron, and Peter Boveng	Hematology values, dive characteristics, and food habits of ribbon and spotted seals in the Bering Sea	2	



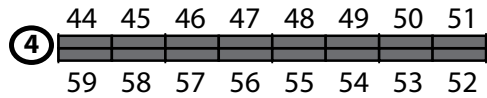
① Row #s



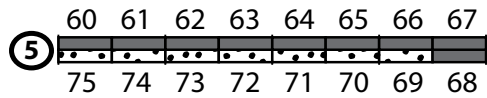
Fish and Fish Habitats



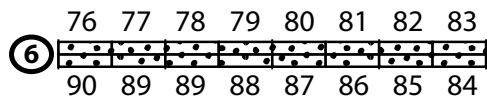
Lower Trophic Levels



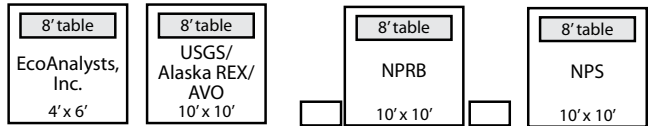
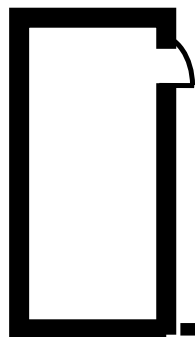
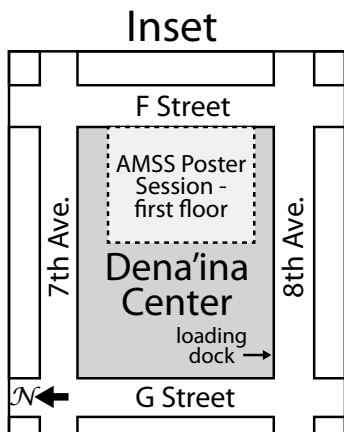
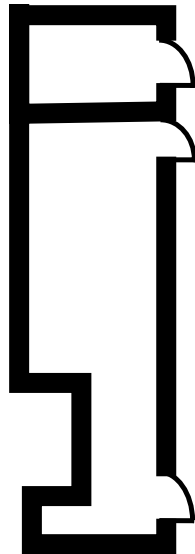
Lower Trophic Levels



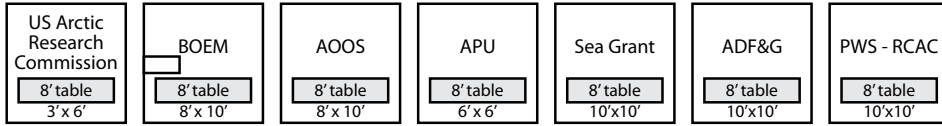
Humans



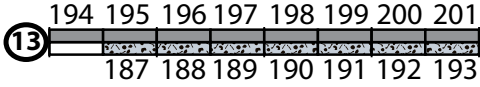
Lobby



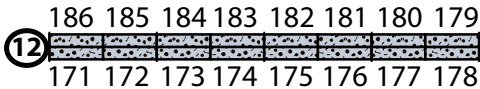
Dena'ina Civic & Convention Center
Idlughet (Eklutna)
Exhibit Hall
Room 1



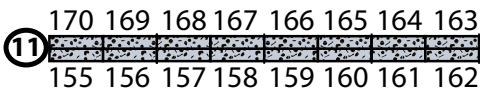
IERP



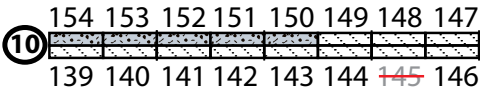
Ecosystem Perspectives



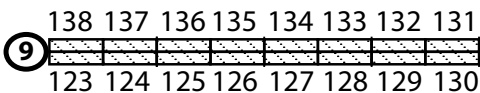
Ecosystem Perspectives



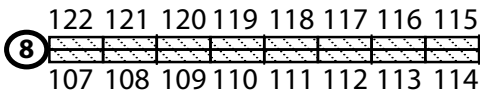
Ecosystem Perspectives



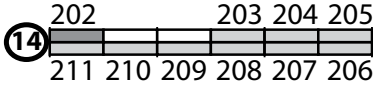
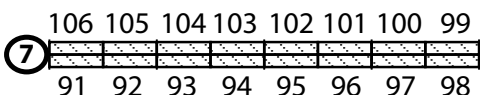
Mammals



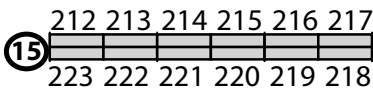
Mammals



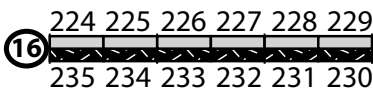
Mammals



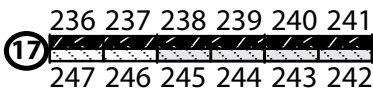
Climate and Oceanography



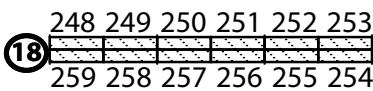
Climate and Oceanography



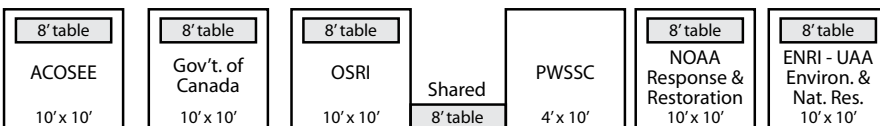
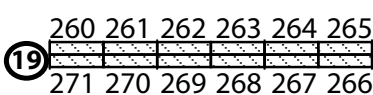
Seabirds



Mammals



Mammals



Loading Dock

SORTED BY SECTION AND POSTER NUMBER

Row #	Poster #	LME	Authors	Title	Wave #	Student Judging #
Fish and Fish Habitat						
1	1	Arctic	Mark Blakeslee, Katrin Iken, and Brenda Konar	Mapping of a kelp bed on rocky substrate near Peard Bay, Chukchi Sea, using imagery from a towed video/sonar sled	1	
1	2	Arctic	Brenda Norcross, Brenda Holladay, Christine Gleason	Length-weight-age relationships of demersal fishes in the Chukchi Sea	2	
1	3	Arctic	Andy Majewski, Jim Reist, and Lisa Loseto	Fisheries research in support of Fisheries and Oceans Canada's regulatory role in hydrocarbon development in the Canadian Beaufort Sea	1	
1	4	Arctic	Andy Majewski, Brittany Lynn, Jim Reist, and Mark Lowdon	Community composition of demersal marine fishes in the Canadian Beaufort Sea	2	
1	5	Bering Sea	Jacob Gregg, Frank Morado, Claude Dykstra, Barbi Failor, Carolyn Friedman, Brad Harris, Maureen Purcell, and Paul Hershberger	Prevalence and phylogenetic analysis of the parasite <i>Ichthyophonus</i> from several marine fish hosts in the NE Pacific	1	
1	6	Bering Sea	Krista Nichols, Lara Horstmann-Dehn, Suman Maity, Alexandra DeWitt, and Maria Sepulveda	Disease prevalence and links to metabolic condition in Chinook salmon during the marine migration phase	2	
1	7	Bering Sea	Alexis Marie Hall	Relationship among groundfish, crabs, and trawling in the Bering Sea	1	207
1	8	Bering Sea	Andre Punt and Cody Szuwalski	How well can surplus production models estimate FMSY and BMSY for crab stocks?	2	
1	9	Bering Sea	Ron Heintz, Elizabeth Siddon, and Ed Farley	Climate related changes in the nutritional condition of young-of-the-year pollock from the eastern Bering Sea	1	
1	10	Bering Sea	Laura M. Stichert and Douglas Pengilly	Eastern Bering Sea snow crab: Observations of growth & mating in the laboratory, 2007–2011	2	
1	11	Bering Sea	Steve A. MacLean, John Gruver, John Gauvin, and Jena Carter	Development and efficacy of a Chinook salmon excluder device in the Bering Sea pollock trawl fishery	1	
1	12	Bering Sea	Jonathan I. Richar, Gordon H. Kruse, Albert J. Hermann, and Enrique N. Curchitser	Spatio-temporal variability in simulated advection patterns of larval Tanner crab in the eastern Bering Sea	2	204
1	13	Bering Sea	Jonathan I. Richar, Gordon H. Kruse, Albert J. Hermann, and Enrique N. Curchitser	Recruitment mechanisms for eastern Bering Sea Tanner crab—a geospatial approach	1	197
1	14	Bering Sea	Tadayasu Uchiyama, Gordon H. Kruse, and Franz Mueter	Modeling the effect of predation in the eastern Bering Sea fish community	2	208
1	15	Bering Sea	Kevin Siwicke, Trent M. Sutton, and Andrew C. Seitz	Utilization of attack scars as a proxy for lamprey abundance and distribution in the eastern Bering Sea	1	206
1	16	Bering Sea	Robert V. Walker and Heather Wiedenhoft	Condition of Bering Sea Chinook salmon in fall and winter	2	
2	17	Bering Sea	Cody Szuwalski and Andre Punt	Regime shifts and oscillating control of snow crab, <i>Chionoecetes opilio</i> , recruitment in the eastern Bering Sea	1	196
2	18	Bering Sea	Marilyn Fox Zaleski and Sherry L. Tamone	What does it take to mate? Comparing gonadosomatic index, methyl farnesoate, and shell condition in eastern Bering Sea snow crab <i>Chionoecetes opilio</i>	2	209
2	19	Bering Sea	Joel Webb, Ginny Eckert, and Gordon Kruse	Are all eggs equal? Maternal effects on embryo quality in the snow crab, <i>Chionoecetes opilio</i>	1	205
2	20	Gulf of Alaska	Kevin M. Boswell, Johanna J. Vollenweider, John M. Moran, Ron A. Heintz, Jason K. Blackburn, and David J. Csepp	Humpback whale foraging structures winter schooling behavior of Pacific herring and facilitates commensal predation by multiple predators	1	
2	21	Gulf of Alaska	Michael Kohan, Megan McPhee, Joe Orsi, Phil Mundy, and Franz Mueter	How biophysical dynamics predict differences in juvenile chum salmon (<i>Oncorhynchus keta</i>) physiology	2	332

SORTED BY SECTION AND POSTER NUMBER

Row #	Poster #	LME	Authors	Title	Wave #	Student Judging #
2	22	Gulf of Alaska	Michele Buckhorn and Richard Thorne	Acoustic assessment of juvenile herring in Prince William Sound	1	
2	23	Gulf of Alaska	Katharine Miller, Brenda Norcross, Falk Huettmann, and Mitch Lorez	Application of machine learning models to predict fish species distributions in Alaskan estuaries	2	
2	24	Gulf of Alaska	Keith Cox, Johanna Vollenweider, Ron Heintz, Paul Hershberger, Jacob Gregg, and Wyatt Fournier	Failures of bioenergetic models to accurately predict mass loss in fasting Pacific herring (<i>Clupea pallasii</i>)	1	
2	25	Gulf of Alaska	Bonita Nelson	Estimated metabolic costs associated with locomotion in Pacific herring (<i>Clupea pallasii</i>)	2	
2	26	Gulf of Alaska	Keith Cox	Check it out!! It's really simple and cool: Calculating basal metabolic rates (BMR) in Pacific herring (<i>Clupea pallasii</i>) using simple first derivatives and integration calculus functions	1	
2	27	Gulf of Alaska	Katie J. Palof, Dana Hanselman, Terrance J. Quinn, and Anthony J. Gharrett	Preliminary evaluation of combining genetics and population dynamics to improve the management of Pacific ocean perch, <i>Sebastes alutus</i>	2	334
2	28	Gulf of Alaska	Danielle Duncan and Mark Carls	Are creosote pilings a hazard to herring embryos?	1	331
2	29	Gulf of Alaska	Scott Pegau	Factors influencing spatial patterns of overwintering survival of age-0 Pacific herring	2	
2	30	Gulf of Alaska	Thomas Farrugia and Andrew Seitz	An interdisciplinary sustainability assessment of the skate fishery in Prince William Sound, Alaska: Movement patterns, stock assessment and bioeconomic modeling	1	329
2	31	Gulf of Alaska	Andy Seitz, Seth Danielson, Hank Statscewich, and Peter Winsor	Locating acoustic-tagged fishes and describing their environment using an autonomous underwater vehicle	2	
2	32	Gulf of Alaska	Wyatt Fournier and Jamal Moss	Regional and seasonal food habits of adult salmon in the Gulf of Alaska and implications for mortality of Age-0 marine fish	1	
3	33	Gulf of Alaska	Fletcher Sewall, Ron Heintz, and Johanna Vollenweider	Spatial and interannual variability in growth and body composition over winter in juvenile Pacific herring (<i>Clupea pallasii</i>) from Prince William Sound	2	335
3	34	Gulf of Alaska	Stewart Grant	Deep and shallow genetic structure among red king crab populations in Alaska	1	
3	35	Gulf of Alaska	Megan M. Stachura, Nate Mantua, Anne Hollowed, and Ray Hilborn	An investigation of northeast Pacific groundfish recruitment variability driven by the environment	2	333
3	36	Gulf of Alaska	Paul K. Hershberger, Jacob L. Gregg, Steve Moffitt, Rich Brenner, Kyle Garver, Jan Lovy, Johanna J. Vollenweider, and Ted Meyers	Epizootiological observations from five years of <i>Ichthyophonus</i> monitoring in Pacific herring populations	1	
3	37	Gulf of Alaska	Jordan T. Watson, Mary Anne Bishop, Sean P. Powers, Stan Bosarge, and Brad F. Reynolds	Nearshore piscivory during the winter in Prince William Sound	2	
3	38	Gulf of Alaska	Jon P. Houghton, James E. Starks, Jason P. Stutes, and Michelle A. Havey	Seasonal fish use of nearshore habitats in southwestern Cook Inlet	1	
3	39	Gulf of Alaska	Carrie Worton, David Barnard, Gregg Rosenkranz, and Christian de Moustier	Mapping Tanner crab habitat in the Kodiak Area of the Gulf of Alaska	2	
3	40	Gulf of Alaska	Ryan P. Kovach, John Joyce, and David A. Tallmon	Climate induced changes in the phenology and evolutionary potential of multiple salmonid species	1	
3	41	Gulf of Alaska	Sarah Lyon, Jacqueline Patt, Jon Heifetz, Thomas Weingartner, and Anthony J. Gharrett	Preliminary evaluation of fine-scale population genetic structure of northeastern Gulf of Alaska Pacific ocean perch	1	
3	42	Gulf of Alaska	Julie Nielsen and Andrew Seitz	Geolocation of demersal fishes in Alaska using geomagnetic archival tags	1	330

SORTED BY SECTION AND POSTER NUMBER

Row #	Poster #	LME	Authors	Title	Wave #	Student Judging #
3	43	Gulf of Alaska	Dongwha Sohn, Lorenzo Ciannelli, Janet Duffy-Anderson, and Timothy Loher	Spatial and temporal distributions of Pacific halibut from eggs to larvae in the eastern Bering Sea and the Gulf of Alaska	1	313
Lower Trophic Levels						
4	44	Arctic	Sarah Mincks Hardy, Michael Lindgren, and Falk Huettmann	Predicting the distribution and ecological niche of unexploited snow crab (<i>Chionoecetes opilio</i>) populations in Alaskan waters: A first open-access ensemble model	2	
4	45	Arctic	Bodil A. Bluhm, Rolf Gradinger, and Katrin Iken	Beaufort Gyre sea ice biota at the end of summer melt	1	
4	46	Arctic	Bodil A. Bluhm and Katrin B. Iken	Population assessment of snow crab, <i>Chionoecetes opilio</i> , in the Beaufort Sea: Preliminary findings	1	
4	47	Arctic	Marissa Hajduk and Arny Blanchard	Temporal trends of benthic fauna in the northeastern Chukchi Sea, 2008-2010	2	118
4	48	Arctic	Lauren M. Divine, Katrin Iken, and Bodil A. Bluhm	Fitting snow crabs into benthic food webs in the central Alaskan Beaufort Sea	1	117
4	49	Arctic	Jeffrey Napp, Adam Spear, and Phyllis Stabeno	Acoustic detection of zooplankton in the Chukchi Sea	2	
4	50	Arctic	Imme Rutzen, Russell R. Hopcroft, and Falk Huettmann	Predicting pan-arctic zooplankton abundance at the species level	1	112
4	51	Arctic	Kelley Tu and Arny Blanchard	Isotopic food web comparisons of two survey sites in the northeastern Chukchi Sea	2	119
4	52	Bering Sea	Jenefer Bell and Joyce Soong	2011 Norton Sound benthic trawl survey	1	
4	53	Bering Sea	Rolf Gradinger, Bodil Bluhm, and Katrin Iken	Sedimentation processes under the seasonal sea ice of the Bering Sea	2	
4	54	Bering Sea	David Drumm and James W. Orr	Marine macroinvertebrates of Alaska: Annotated checklist	1	
4	55	Bering Sea	Calvin W. Mordy and Michael Lomas	The impact of sea-ice on bottom-up and top-down controls of crustacean zooplankton and the mediation of carbon and energy flow in the eastern Bering Sea	2	
4	56	Bering Sea	Laura Gemery, Lee Cooper, and Thomas Cronin	Benthic ostracode assemblages in the Bering and Chukchi seas from 1976 to 2010	1	
4	57	Bering Sea	Steven Porter and Kevin Bailey	Using muscle cell nuclear RNA to improve condition measurements of walleye pollock, <i>Theragra chalcogramma</i> , larvae using flow cytometry	2	
4	58	Bering Sea	Georgina Gibson, Kenneth Coyle, Kate Hedstrom, and Enrique Curchitser	Processes controlling the on-shelf transport of oceanic mesozooplankton populations in the eastern Bering Sea.	1	
4	59	Gulf of Alaska	Sonia Batten	Over a decade of monitoring lower trophic levels on the Alaskan shelf	1	
5	60	Gulf of Alaska	Wayne Litaker, Kate Sullivan, Mark Vandersea, Steve Kibler, Megan Nepshinsky, Greg Zychowski, and Patricia Tester	Hands-on workshop to identify toxic Alexandrium species using qPCR methods	2	
5	61	Gulf of Alaska	C.J. Beegle-Krause, Melanie Schroeder, Deborah French McCay, Xiaochun Wang, and Yi Chao	LarvaMap – a web based larval behavior model for Prince William Sound and high latitude Pacific	1	
5	62	Gulf of Alaska	Charlotte M. Regula-Whitefield and Sarah M. Hardy	Preliminary findings on the effects of maternal diets on egg and early larval development in the California sea cucumber (<i>Parastichopus californicus</i>)	2	302
5	63	Gulf of Alaska	Rob William Campbell	State of the Sound: Recent oceanographic conditions in Prince William Sound.	1	

SORTED BY SECTION AND POSTER NUMBER

Row #	Poster #	LME	Authors	Title	Wave #	Student Judging #
5	64	Gulf of Alaska	Leandra Sousa, Kenneth Coyle, Thomas Weingartner, and Russel Hopcroft	Climate-related variability in abundance of mesozooplankton in the northern Gulf of Alaska 1998-2009	2	
5	65	Gulf of Alaska	Raphaelle Descoteaux, Sarah Mincks Hardy, Katrin Iken, and Jeremy Mathis	Effects of ocean acidification on larval development in Alaskan crabs	1	301
5	66	Gulf of Alaska	Ayla Doubleday and Russell Hopcroft	Decadal estimates of productivity by pteropods and larvaceans in the coastal Gulf of Alaska	1	64
5	67	Gulf of Alaska	Katrin Iken and Brenda Konar	Rhodolith habitat in Prince William Sound	1	
5	68	Gulf of Alaska	Dennis C. Lees, Christopher J. Hein and Emily A. Carruthers	Status of hard-shell clam assemblages in organized coarse-grained sediments in western Prince William Sound – A preliminary report	1	
Humans						
5	69	Arctic	Katie Moerlein, Courtney Carothers, and Andres Lopez	Observations and implications of climate change in subsistence fishing communities in northwest Alaska	2	98
5	70	Arctic	Amy Holman	NOAA-Shell/ConocoPhillips/Statoil Data Sharing Memorandum of Agreement	1	
5	71	Arctic	Amy Holman and Jackie Kramer	National Ocean Council Arctic Strategic Action Plan	1	
5	72	Arctic	Leslie Pierce, John“Craig” George, Cyd Hanns, Jason Herreman, Mike Pederson, Brian Person, Todd Sformo, Robert Suydam, and Taqulik Hepa	From north to north: Outreach and educational opportunities on the North Slope	2	
5	73	Arctic	Shelley Woods, Craig George, and Courtney Carothers	An interdisciplinary description of the Elson Lagoon subsistence fishery	1	97
5	74	Arctic	Julie Raymond-Yakobian	Ijalit traditional knowledge of walrus in the Bering Strait	2	
5	75	Bering Sea	Lidiya Alexandrovna Bukina	Trichinellosis in marine mammals as a zoonotic disease, and possible ways of transmission of <i>Trichinellosis</i> to humans in the Chukchi Peninsula	1	
6	76	Bering Sea	Kevin R. Wood and Nancy N. Soreide	Large-scale arctic climate data recovery at the US National Archives	2	
6	77	Bering Sea	Jennifer Burns, David Withrow, Yoko Kugo, Davin Holen, Jaime Van Lanen, Helen Aderman, and Tatiana Askoak	Examining vulnerable seal populations in Lake Iliamna using local knowledge and western science techniques	1	
6	78	Bering Sea	Alan Haynie and Lisa Pfeiffer	Climate change and fisher location choice in the Pacific cod longline fishery	1	
6	79	Bering Sea	Phillip A. Zavadil, Bruce W. Robson, and Stephen J. Insley	Online community based ecological monitoring in the Bering Sea	2	
6	80	Bering Sea	Hannah Voorhees	A new “knowledge economy”: The re-valorization of subsistence hunting techniques for marine mammal monitoring in the Arctic	1	179
6	81	Bering Sea	Janet Warburton	From sea to shore –The benefits of ship-based teacher research experiences	2	
6	82	Gulf of Alaska	G. Carl Schoch, Rob Bochanek, and Susan Saupe	A collaboration for oil spill planning and response: Demonstration of the Cook Inlet response tool	1	
6	83	Gulf of Alaska	Catherine Bursch	Growing a sustainable community monitoring program	1	
6	84	Gulf of Alaska	Ian Dutton, Janet Klein, Karen Cain, Rebekka Federer, Ricky Deel, Hillary LeBail, Joseph Hunt, and Casey Schulke	Generating an oral history of habitat use by Cook Inlet belugas in waters of the Kenai Peninsula Borough	1	
6	85	Gulf of Alaska	Gunnar Lauenstein, Jeff Hetrick, John Davenport, and Dennis Apeti	Assessment of contaminant levels in subsistence shellfish from Resurrection Bay, AK: An interspecies comparison	1	

SORTED BY SECTION AND POSTER NUMBER

Row #	Poster #	LME	Authors	Title	Wave #	Student Judging #
6	86	Gulf of Alaska	Hillary LeBail, Ian Dutton, and Joseph Hunt	Public perception of climate change and its impact on Alaska's marine ecosystems	1	
6	87	Gulf of Alaska	Rachel Lord	Alaska clean harbors: Reducing pollution at Alaska's harbors and marinas	2	
6	88	Gulf of Alaska	Leila Madge, Edward Glazier, and Laura Stanley	Socioeconomic assessment of major oil spill litigation and settlement	2	
6	89	Gulf of Alaska	Erica L. McCall Valentine, William E. Simeone, Marie Lowe, Liliana Naves, Gloria Stickwan, and James Brady	Cultural models of Copper River salmon biology	2	
6	90	Gulf of Alaska	Thomas Stewart, Randy Allen, Sherwood Hall, Wayne Litaker, and Pat Tester	Paralytic Shellfish Poisoning: Preparation of monoclonal antibodies to Saxitoxins for use in PSP detection	2	
Mammals						
7	91	Arctic	Lisanne A.M. Aerts, Alex Kirk, Kate Lomac-MacNair, Alexandra McFarland, Bridget Watts, Pam Seiser, and Jay Brueggeman	Seals and walrus distribution in the offshore northeastern Chukchi Sea: Relation with potential organisms	1	
7	92	Arctic	Nadine Stewart Lysiak, Mark Baumgartner, and J. Craig George	Correlating shifting baselines in the Arctic to long-term bowhead whale isotope records	2	
7	93	Arctic	Peter Boveng, Michael Cameron, John Goodwin, and Alex Whiting	Seasonal migration of bearded seals between intensive foraging patches	1	
7	94	Arctic	James (Jim) G. MacCracken, Joel Garlich-Miller, and Jonathan Snyder	Pacific walrus and climate change: Observations and predictions	2	
7	95	Arctic	John R. Brandon, Tannis Thomas, Susanna Blackwell, William R. Koski, Darren S. Ireland, Craig Reiser, Marc Bourdon, Dale W. Funk, and A. Michael Macrander	Ice, seismic activity and the 2010 fall migration of bowheads through Harrison Bay in the central Beaufort Sea	1	
7	96	Arctic	Julie A. Mocklin, Linda Vate Brattström, Kim E. W. Shelden, Kimberly T. Goetz, and David J. Rugh	Results from five years of aerial surveys during the Bowhead Whale Feeding Ecology Study (BOWFEST) off Barrow, Alaska	2	
7	97	Arctic	Amelia Ann Brower, Cynthia Christman, Megan Ferguson, Janet Clarke, Stephanie Grassia, Rebecca Shea, Brenda Rone, and Amy Kennedy	Eastern North Pacific gray whales and Minke whales from aerial surveys in the Alaskan Arctic, summer and fall 2011	1	
7	98	Arctic	Anna Bryan, Lori Quakenbush, and Lara Horstmann-Dehn	How well do stable isotopes represent bearded seal diet?	2	160
7	99	Arctic	Sara S. Carroll, Lara Horstmann-Dehn, and Brenda L. Norcross	A drill in time: Stable isotope analysis of ice-seal claws	1	138
7	100	Arctic	Patrick R. Lemons and Cynthia Christman	Pacific walrus (<i>Odobenus rosmarus divergens</i>) abundance and use of the northeast Chukchi Sea based on COMIDA aerial surveys	2	
7	101	Arctic	Cynthia Christman, Amelia Brower, Jane Clarke, Megan Ferguson, Stephanie Grassia, Amy Kennedy, Brenda Rone, and Rebecca Shea	Aerial observations of Pacific walruses (<i>Odobenus rosmarus divergens</i>) in the northeastern Chukchi Sea, summer and fall 2011	1	
7	102	Arctic	Kalyn Q. MacIntyre, Kathleen M. Stafford, Catherine L. Berchok, and Peter L. Boveng	Year-round passive acoustic monitoring of bearded seal vocalizations at three locations in the Beaufort Sea, 2008-2010	2	163
7	103	Arctic	Janet Clarke, Megan Ferguson, Cynthia Christman, Amelia Brower, Stephanie Grassia, Rebecca Shea, Brenda Rone, Amy Kennedy	Distribution and relative abundance of belugas (<i>Delphinapterus leucas</i>) in the Alaskan Arctic, summer and fall, 2011	1	
7	104	Arctic	Anneliese Moll, Michael Mahoney, Josh Jones, Ian Sia, Malorie Johnson, Sean Wiggins, and John Hildebrand	Seasonal presence and acoustic behavior of beluga whales (<i>Delphinapterus leucas</i>) north of Point Barrow, Alaska	2	162

SORTED BY SECTION AND POSTER NUMBER

Row #	Poster #	LME	Authors	Title	Wave #	Student Judging #
7	105	Arctic	Jessica Crance, Catherine Berchok, Brenda Rone, Amy Kennedy, Elizabeth Küsel, Laura Morse, Jessica Thompson, and Phillip Clapham	Short-term trends in the summer distribution of cetaceans in the Chukchi Sea	1	
7	106	Arctic	Daniel Monson and Chadwick Jay	Estimating the age composition of Pacific walrus herds on shore haul-outs from gyro-stabilized, high definition videography	2	
8	107	Arctic	Justin A. Crawford, Willard Neakok, Mark A. Nelson, Joel Garlich-Miller, and Lori Quakenbush	Results from village-based walrus studies in Alaska, 2011	1	
8	108	Arctic	Mark A. Nelson, John Goodwin, and Lori Quakenbush	Subsistence harvest records for ice seals in Alaska, 1960–2010	2	
8	109	Arctic	Brendan Cummings and Rebecca Noblin	Polar bear recovery planning: Reconciling Endangered Species Act requirements with the reality of a rapidly melting arctic	1	
8	110	Arctic	Craig M. Reiser, Julien Delarue, Dale W. Funk, Darren S. Ireland, and Danielle M.S. Dickson	Recent visual and acoustic detections of fin and humpback whales in the Alaskan Chukchi Sea	2	
8	111	Arctic	Shawn P. Dahle, Michael F. Cameron, Peter L. Boveng	Will global warming result in habitat gains for ice-breeding bearded seals?	1	
8	112	Arctic	Jeffrey M. Welker, Matthew O’Dell, Kristin Simac, Matthew Rogers, and Lily Peacock	Isotopic ($\delta^{13}C$, $\delta^{15}N$, $\delta^{34}S$) variation of Beaufort Sea polar bear tissues	2	
8	113	Arctic	Julien Delarue, Bruce Martin, Xavier Mouy, and David Hannay	Acoustic detections of bowhead whales in the northeastern Chukchi Sea, September 2007 to July 2011	1	
8	114	Arctic	Megan Ferguson, Janet Clarke, Amelia Brower, Cynthia Christman, Stephanie Grassia, Amy Kennedy, Brenda Rone, and Rebecca Shea	Bowhead whale (<i>Balaena mysticetus</i>) distribution and relative abundance in the Alaskan Arctic, summer and autumn, 2011	1	
8	115	Arctic	Joel Garlich-Miller, Willard Neakok, Patrick Lemons, Justin Crawford, Kathy Burek, and Raphaela Stimmelmayer	Mortality of walruses at a coastal haulout, Point Lay, Alaska, autumn 2011	1	
8	116	Arctic	Samantha Schaeffer, Michael Mahoney, and Clarissa Zeller	Seasonal variation of bearded seal (<i>Erignathus barbatus</i>) calls north of Barrow, Alaska during the winter and spring of 2010	2	161
8	117	Arctic	Stephanie Laurel Grassia, Catherine L. Berchok, and Phillip J. Clapham	Interannual temporal and spatial distribution of bowhead whales in the western Alaskan Beaufort Sea; 2007-2010	1	
8	118	Arctic	Jason K. Herreman, David Douglas, and Lori Quakenbush	Movement and haulout behavior of ringed seals during the 2011 open water season	1	
8	119	Arctic	Jason Herreman, Ross Burgener, Joe Skin, Robert Sarren, Cydd Hanns, Kathy Burek, Ole Nielsen, Stephen Raverty, and Raphaela Stimmelmayer	Preliminary result on the spatial distribution and clinical presentation of an emerging disease syndrome in ringed seals of the Arctic Ocean	1	
8	120	Arctic	Larissa Horstmann-Dehn, Craig George, Gay Sheffield, and Mark Baumgartner	Bowhead whale feeding efficiency – Making a living in the Arctic	1	
8	121	Arctic	Chadwick V. Jay, Anthony S. Fischbach, and Anatoly A. Kochnev	Walrus foraging areas in the Chukchi Sea during years of scarce summer sea ice	1	
8	122	Arctic	William R. Koski, John R. Brandon, Darren S. Ireland, Dale W. Funk, M. Reiser Craig, and A. Michael Macrander	Do bowhead whales avoid sound pressure levels of 120 dB re 1 μ Pa (rms) from seismic surveys during fall migration?	1	
9	123	Arctic	Jill-Marie Seymour, Greta M. Krafur, Lara A. Horstmann-Dehn, Laura Oxtoby, Carl Nayakik, Cyd Hanns, and Matthew Wooller	A tail of two tails: Examination and tissues analyses of a seal-eating walrus	1	159

SORTED BY SECTION AND POSTER NUMBER

Row #	Poster #	LME	Authors	Title	Wave #	Student Judging #
9	124	Arctic	Aaron Thode	Range and depth estimates of bowhead whale calls detected in the Alaskan Beaufort Sea using a vertical array	2	
9	125	Bering Sea	Brian C. Battaile, Chad A. Nordstrom, and Andrew W. Trites	Contrasting meso-scale foraging behavior of northern fur seals (<i>Callorhinus ursinus</i>) from two Bering Sea islands with dramatically different population trends	1	
9	126	Bering Sea	Eugene T. Lyons, Tetiana A. Kuzmina, Terry R. Spraker, and Tom Gelatt	Biology and prevalence of the hookworm (<i>Uncinaria lucasi Stiles, 1901</i>) in northern fur seals (<i>Callorhinus ursinus Linnaeus, 1758</i>) on St. Paul Island, Alaska	2	
9	127	Bering Sea	Olga Belonovich, Sergey Fomin, and Ludmila Konovalova	Killer whales predation off Severnoe rookery, the Commander Islands, Russia	1	
9	128	Bering Sea	Shawn R. Noren, Mark S. Udevitz, and Chadwick V. Jay	Bioenergetics model for estimating food requirements of female Pacific walrus (<i>Odobenus rosmarus divergens</i>)	2	
9	129	Bering Sea	Vladimir N. Burkanov, Alexey V. Altukhov, Russel D. Andrews, Donald G. Calkins, and Thomas S. Gelatt	Steller sea lion (<i>Eumetopias jubatus</i>) demographic studies in Russian waters	1	
9	130	Bering Sea	Lori Polasek	Pacific walrus haulout monitoring: 2011	2	
9	131	Bering Sea	Michael Cameron, Peter Boveng, Erin Moreland, Jay Ver Hoef, and Vladimir Chernook	Synoptic aerial surveys and abundance estimates for ice-associated seals in US and Russian waters	1	
9	132	Bering Sea	Lorrie Rea, Alison Banks, J. Margaret Castellini, Brian Fadely, and Vladimir Burkanov	Plasma haptoglobin concentrations vary by region of capture in free-ranging Steller sea lion pups	2	
9	133	Bering Sea	Jessica Reiner, Jennifer Keller, Steven O'Connell, John Kucklick, Michele Schantz, Amanda Moors, Rebecca Pugh, and Paul Becker	Retrospective analysis of perfluorinated alkyl acids in marine mammals from Alaska	2	
9	134	Bering Sea	Nancy A. Friday, Alexandre N. Zerbini, Janice M. Waite, Sue E. Moore, and Phillip J. Clapham	Cetacean distribution and abundance in relation to oceanographic domains on the Eastern Bering Sea shelf in June and July of 2002, 2008, and 2010	1	
9	135	Bering Sea	Ryan Kingsbery and Leslie Cornick	Northern fur seal (<i>Callorhinus ursinus</i>) pup entanglement before and after marine debris beach cleanups on St. George Island, Alaska	2	241
9	136	Bering Sea	Declined	Declined		228
9	137	Bering Sea	Erin Kunisch, Markus Horning, and Tom Gelatt	Reproductive timing and median dates of birth of northern fur seals in 2008 and 2009	2	240
9	138	Bering Sea	Tetiana A. Kuzmina, Eugene T. Lyons, and Terry R. Spraker	Anisakids (Nematoda: Anisakidae) from stomachs of the northern fur seals (<i>Callorhinus ursinus Linnaeus, 1758</i>) in St. Paul island, Alaska: Current state of parasite situation	2	
10	139	Bering Sea	Tetiana A. Kuzmina, Eugene T. Lyons, Terry R. Spraker, and Tom Gelatt	<i>Dipetalonema odendhali</i> (Nematoda: Filarioidea) from northern fur seals (<i>Callorhinus ursinus Linnaeus, 1758</i>) in St. Paul island, Alaska	2	
10	140	Bering Sea	Shiway W. Wang, Suzanne M. Budge, Lara Horstmann-Dehn, Lori T. Quakenbush, Alan M. Springer, and Matthew J. Wooller	Foraging patterns of ice seals in Alaska inferred from fatty acid profiles	1	239
10	141	Bering Sea	David A. S. Rosen and Andrew W. Trites	Lacka mackerel? Is Atka mackerel "good enough" for Steller sea lions?	2	
10	142	Bering Sea	Gay G. Sheffield and Lauri A. Jemison	Spanning the north Pacific: Steller sea lions at St. Lawrence Is., Nov-Dec 2011	2	
10	143	Bering Sea	Bobette R. Dickerson, James R. Thomason, and J. Ward Testa	Using telomere length to age northern fur seals, <i>Callorhinus ursinus</i> , from the Pribilof Islands, Alaska	1	
10	144	Bering Sea	Terry R. Spraker, Bobette Dickerson, and Tom Gelatt	Congenital anomalies in northern fur seal pups on St. Paul Island, Alaska from 1986 to 2011	2	

SORTED BY SECTION AND POSTER NUMBER

Row #	Poster #	LME	Authors	Title	Wave #	Student Judging #
10	145	Bering Sea	Declined	Declined	2	
10	146	Bering Sea	John N. Trent	A chronology of Pacific walrus tusk marking as a management tool	2	
10	147	Bering Sea	Paul R. Wade, John Durban, Holly Fearnbach, David Ellifrit, and Janice Waite	Abundance and prey of mammal-eating killer whales in the Aleutian Islands	2	
10	148	Bering Sea	Adam Zaleski, Shannon Atkinson, and Vladimir Burkanov	The effect of organochlorine contaminants on Steller sea lion (<i>Eumetopias jubatus</i>) reproduction and re-sight probability	1	242
10	149	Bering Sea	Heather Ziel, Josh London, Michael Cameron, and Peter Boveng	Hematology values, dive characteristics, and food habits of ribbon and spotted seals in the Bering Sea	2	
17	242	Gulf of Alaska	Russel D. Andrews, Jan M. Straley, Gregory S. Schorr, Aaron M. Thode, John Calambokidis, Chris R. Lunsford, John R. Moran, and Victoria O'Connell	Untangling longline depredation: LIMPET tags on eastern Gulf of Alaska sperm whales reveal deep dives and local movements around the shelf-edge that contrast with rapid, long-distance migrations across stock boundaries	1	
17	243	Gulf of Alaska	Lucero Correa, Lorrie D. Rea, Camilla Lieske, J. Margaret Castellini, Brian S. Fadely, and Todd M. O'Hara	Mercury in blood and keratinous tissue of piscivorous mammals	2	370
17	244	Gulf of Alaska	Rachael Blevins, Shannon Atkinson, Marc Lammers, and Robert Small	Calling behavior of Cook Inlet beluga whales	1	351
17	245	Gulf of Alaska	Justin Jenniges, Robert J. Small, Manuel Castellote, Marc O. Lammers, Shannon Atkinson, Chris Garner, Anne Rosinski, Delmar Westerholt, Sue Moore, and Whitlow W. L. Au	Monitoring seasonal distribution of Cook Inlet beluga whales with passive acoustic technology	2	
17	246	Gulf of Alaska	Gail Blundell and Grey Pendleton	Factors affecting haul-out probability of harbor seals in tidewater glacier inlets	1	
17	247	Gulf of Alaska	Shawna A. Karpovich, Jeff Mondragon, Grey W. Pendleton, and Gail M. Blundell	Paired heart rate and dive data for 46 consecutive days on a free-ranging harbor seal (<i>Phoca vitulina</i>)	2	
18	248	Gulf of Alaska	Lizabeth Bowen, James L. Bodkin, Brenda Ballachey, Michael Murray, and A. Keith Miles	Gene transcript profiles in sea otters (<i>Enhydra lutris</i>): A new paradigm in ecosystem health	1	
18	249	Gulf of Alaska	Elle Chenoweth, Christine Gabriele, and David Hill	Humpback whale habitat selection near tidal headland-wakes	2	371
18	250	Gulf of Alaska	Mandy J. Keogh, Shannon Atkinson, and John M. Maniscalco	Effects of hot-iron branding on the endocrine and immune profiles of Steller sea lion (<i>Eumetopias jubatus</i>) pups	2	
18	251	Gulf of Alaska	Bonnie Easley-Appleyard, Lori Polasek, Tamara McGuire, and Ian Dutton	Cook Inlet beluga whale behavioral observations via video-monitoring	1	
18	252	Gulf of Alaska	Craig O. Matkin, Russel D. Andrews, Eva Saulitis, and Graeme Ellis	Expanding perspectives, investigating pod specific killer whale habitat with ARGOS satellite telemetry	2	
18	253	Gulf of Alaska	Tal Ezer	A study of the environmental and physical factors that influence the movement and survival of beluga whales in Cook Inlet, Alaska	1	
18	254	Gulf of Alaska	Brett T. McClintock	A general modelling framework for animal movement and migration using multi-state random walks	2	
18	255	Gulf of Alaska	Dagmar Fertl, Aude Pacini, Michael E. Richlen, Gregory L. Fulling, and Keri C. Lestyk	First noise measurements of an oscillator system for drilled shafts: Its implications for the endangered Cook Inlet beluga whale (<i>Delphinapterus leucas</i>)	1	
18	256	Gulf of Alaska	Leigh Pinney, Lori Polasek, Jill Prewitt, and Tamara McGuire	Spatial and temporal distribution of Cook Inlet beluga whales in the Little Susitna River delta	2	
18	257	Gulf of Alaska	Elizabeth R. Frame, Preston S. Kendrick, and Kathi A. Lefebvre	Algal toxins in Alaskan Marine Mammals: Assessing current and emerging exposure threats	1	
18	258	Gulf of Alaska	Jill S. Prewitt and Lori K. Polasek	Monitoring reproductive hormones in captive adult female Steller sea lions during a breeding program	2	

SORTED BY SECTION AND POSTER NUMBER

Row #	Poster #	LME	Authors	Title	Wave #	Student Judging #
18	259	Gulf of Alaska	Gretchen L. Geiger, Shannon Atkinson, Gail M. Blundell, James R. Carpenter, Jason Waite, and Kate Wynne	Evaluation of diet composition and plane of nutrition of free-ranging harbor seals (<i>Phoca vitulina</i>) in warm and cool climatic periods	1	350
19	260	Gulf of Alaska	J. Ward Testa, Kenrick J. Mock, Cameron Taylor, Heather Koyuk, Jessica R. Coyle, and Russell Waggoner	Agent-based modeling of mammal-eating killer whales and their prey: Not your lynx-hare cycle	2	
19	261	Gulf of Alaska	Caroline E. C. Goertz, Pam Tuomi, Jane Belovarac, and Robert Walton	Serological survey of <i>Leptosporosis</i> in stranded marine mammals in Alaska	1	
19	262	Gulf of Alaska	Pam Tuomi, Caroline E. C. Goertz, Millie Gray, Lynda Leppert, Jane Belovarac, Robert Walton, and JoAnn Mellish	Intestinal and respiratory parasites in juvenile Steller sea lions (<i>Eumatopias jubatus</i>) from Prince William Sound, Alaska	2	
19	263	Gulf of Alaska	Brad Hanson, Marilyn Dahlheim, Daniel Webster, Candice Emmons, Greg Schorr, and Russ Andrews	How “resident” are resident-type killer whales in Alaska? New data show both localized and widespread movements	1	
19	264	Gulf of Alaska	Alexandre N. Zerbini, Marilyn E. Dahlheim, Janice M. Waite, and Amy S. Kennedy	Evaluation of harbor porpoise (<i>Phocoena phocoena</i>) population decline in southeastern Alaska inland waters	2	
19	265	Gulf of Alaska	Markus Horning and Jo-Ann Mellish	Are western Steller sea lions caught in a predation-driven productivity pit?	1	
19	266	Gulf of Alaska	Markus Horning and Jo-Ann Mellish	Autopsy from space: Do sleeper sharks prey on live Steller sea lions?	1	
19	267	Gulf of Alaska	John R. Moran, Stanley D. Rice, Janice M. Straley, Kevin M. Boswell, and Ron A. Heintz	Significance of whale predation on natural mortality rate of Pacific herring	2	
19	268	Gulf of Alaska	John Jansen, Jay Ver Hoef, Gavin Brady, Shawn Dahle and Peter Boveng	Estimating productivity and pup growth using aerial imagery of harbor seals on ice	1	
19	269	Gulf of Alaska	Lauri A. Jemison, Grey W. Pendleton, Lowell W. Fritz, Rod G. Towell, and Kelly K. Hastings	Inter-population movements of Steller sea lions in Alaska	2	
19	270	Gulf of Alaska	Tamara McGuire, Megan Blee, and Marc Bourdon	What can individual Cook Inlet beluga whales tell us about the habitat use of the population and exposure to potential threats?	1	
19	271	Gulf of Alaska	Aaron Thode, Sheyna Wisdom, Sasha McFarland, Bridget Watts, Christa Koos, and Randy Martinez	Acoustic monitoring of Cook Inlet using a cabled bottom-mounted array system	2	
19	272	Gulf of Alaska	Aaron Thode, Delphine Mathias, Lauren Wild, Janice Straley, Victoria O’Connell, Dan Falvey, Kendall Folkert	Experimental demonstration of passive and acoustic decoys for reducing sperm whale depredation	2	
Ecosystem Perspectives						
11	150	Arctic	Philip D. Martin, Benjamin M. Jones, and Li H. Erikson	Arctic Landscape Conservation Cooperative coastal process studies	2	
10	151	Arctic	Lisa Sheffield Guy, Sue E. Moore, and Phyllis Stabeno	Synthesis of Arctic Research (SOAR) – Physics to marine mammals in the Pacific arctic	2	
10	152	Arctic	Jeffrey F. Bromaghin, Monique M. Lance, Elizabeth W. Elliot, Steven J. Jeffreies, John M. Kennish, and Alejandro Acevedo-Gutierrez	Estimating mean predator diet composition using fatty acid signature data	1	
10	153	Arctic	Helen V. Wiggins, Hajo Eicken, and Susan E. Fox	SEARCH: Study of Environmental Arctic Change - A system-scale, cross-disciplinary arctic research program	2	
10	154	Arctic	Douglas Causey, Naomi A. Bargmann, Veronica A. Padula, Kurt Burnham, Jennifer Burnham, and Jeffrey Welker	Biogeochemical indicators of change in arctic and subarctic marine bird communities: Alaska and Greenland	1	
11	155	Arctic	Douglas Dasher, Stephen Jewett, Brenda Norcross, and Tawna Morgan	Alaska Monitoring and Assessment Program (AKMAP): Preliminary findings from the coastal northeastern Chukchi Sea, 2010–2011	1	

SORTED BY SECTION AND POSTER NUMBER

Row #	Poster #	LME	Authors	Title	Wave #	Student Judging #
11	156	Arctic	Ann E. Gibbs, Bruce M. Richmond, and Li Erikson	Regional shoreline change studies, North Slope coast of Alaska	2	91
11	157	Arctic	Brenda Konar	Recovery in high arctic kelp communities	1	
10	158	Arctic	Craig Bartling, Seth Faith, Mick Arthur, Bernhard Metzger, and Alan Tilstone	The use of 'Omic' technologies to study microbial response to North Slope crude oil in Alaska	1	
11	159	Arctic	Heather J. McEachen, Stephen R. Okkonen, and Russell R. Hopcroft	Measuring arctic zooplankton advection in the Bering and Chukchi Seas	1	90
11	160	Arctic	Stephen Okkonen, Dixon Jones, Phil Alatalo, Carin Ashjian, Mark Baumgartner, Robert G. Campbell, John Citta, Craig George, Kim Goetz, Wieslaw Maslowski, Julie Mocklin, Dave Rugh, Lori Quakenbush, Kate Stafford, and Linda Vate Brattstrom	A year in the life of the bowhead whale: An educational outreach product in calendar format	2	
11	161	Bering Sea	Douglas M. Burn	Introducing the Aleutian and Bering Sea Islands Landscape Conservation Cooperative	1	
11	162	Bering Sea	Robin A. Dublin, Ray Barnhardt, Ember Eck, China Kantner, Molly Adams and Jady Edwardsen-Harrington	Igniting scientific inquiry in Alaska Native and rural students through Ocean Science Fair participation	2	172
11	163	Bering Sea	Kirstin K. Holsman, Kerim Aydin, Jim Ianelli	Incorporating bioenergetics into multi-species statistical catch-at-age models: An example from the Bering Sea	1	
11	164	Bering Sea	Don Stott, James A. Moore, and Steven F. Williams	The Bering Sea Project Data Archive	2	
11	165	Bering Sea	Laura E. Oxtoby, Suzanne Budge, Shiway Wang, Lara Horstmann-Dehn, Katrin Iken, Rolf R. Gradinger, and Matthew Wooller	Carbon cycling in the Bering Sea benthos: Gaining insight from fatty acids	1	170
11	166	Bering Sea	Michael F. Sigler, Thomas I. Van Pelt, and Francis K. Wiese	Road map: Managing outcomes in the ecosystem-scale 'Bering Sea Project' marine research program	2	
11	167	Bering Sea	Andrew W. Trites, Brian Battaile, Ann Harding, Brian Hoover, David Irons, Nat Jones, Kathy Kuletz, Chad Nordstrom, Rosana Paredes, and Dan Roby	Top predators partition the Bering Sea	2	
11	168	Gulf of Alaska	Benjamin Applegate, Birgit Hagedorn, and John M. Kennish	Marine plastic debris: A potential vector for POPs in the marine ecosystem	1	
11	169	Gulf of Alaska	Mayumi Arimitsu, John Piatt, Keith Hobson, Leonard Wassenaar, and Erica Madison	Using stable isotopes to estimate glacier melt-water impacts on nearshore productivity in the Gulf of Alaska	2	270
11	170	Gulf of Alaska	Leah Feinberg and William Peterson	Fecundity of the euphausiid <i>Euphausia pacifica</i> from the North Pacific with a focus on the northern California current and the Gulf of Alaska.	1	
12	171	Gulf of Alaska	Jessica R. Glass and Ginny L. Eckert	Marine Ecosystem Sustainability IGERT: Interdisciplinary Graduate Education in Alaska	2	269
12	172	Gulf of Alaska	Philip Goldstein and Mark Fornwall	OBIS-USA: Ocean Biogeographic Information System - Technology, data, standards and applications	1	
12	173	Gulf of Alaska	Brendan J. Moynahan and Christopher J. Sergeant	Long-term marine monitoring at National Parks in southeast Alaska	2	
12	174	Gulf of Alaska	Jim Griswold, Thomas Dean, Heather Coletti, Shay Howlin, James Bodkin, Kimberly Kloecker, and Brenda Ballachey	Sample size, statistical power estimation and potential implications for a long-term marine nearshore monitoring program	1	
12	175	Gulf of Alaska	Benjamin Van Alen	The end of life as we know it...and other problems with hatcheries	2	
12	176	Gulf of Alaska	Courtney Helen Hann	Sunflower sea star (<i>Pycnopodia helianthoides</i>) feeding behavior at sea otter pits	1	267
12	177	Gulf of Alaska	Lawra Vanderhoof and Mark Carls	Southeast Alaska long-term seawater monitoring program for ocean acidification	2	

SORTED BY SECTION AND POSTER NUMBER

Row #	Poster #	LME	Authors	Title	Wave #	Student Judging #
12	178	Gulf of Alaska	Cindy A. E. Hartmann Moore, Steve G. Lewis, Mary C. Morris, John R. Harper, Mandy R. Lindeberg, Susan M. Saupe, and Norman A. Cohan	Status of ShoreZone Mapping in Alaska and in the Pacific Northwest	1	
12	179	Gulf of Alaska	Kyle R. Hogrefe and David H. Ward	Refined remote sensing technique and field survey data improve mapping of eelgrass distribution from satellite imagery	1	
12	180	Gulf of Alaska	Dominic Hondolero, Kristine Holderied, and Matthew Edwards	Physical and biological characteristics of kelp forests in Kachemak Bay, Alaska	1	
12	181	Gulf of Alaska	Emily Hutchinson and Keith Criddle	Sustainable Ecosystem-Based Management of Living Marine Resources (SELMR)	2	271
12	182	Gulf of Alaska	Mandy Lindeberg and Steve Lewis	Alaska ShoreZone Online – a web enabled GIS database	1	
12	183	Gulf of Alaska	Laurel McFadden, Rob Campbell, Douglas Causey, and Jeffery Welker	Distribution and ecology of zooplankton and juvenile pelagic fishes in the Copper River plume	1	268
12	184	Gulf of Alaska	Alan J. Mearns, David Janka, Mandy Lindeberg and John Whitney	Overview and twenty-two year update of shoreline biological observations in Prince Williams Sound	2	
12	185	Gulf of Alaska	Stephanie Norman, Woutrina Miller, Stefan Wuertz, Ann Melli, Michael Maki, Laurel Beckett, Nadira Chouicha, and Roderick Hobbs	Fecal pathogen pollution: Sources and patterns in water and sediment samples from the upper Cook Inlet, Alaska ecosystem	1	248
12	186	Gulf of Alaska	Jan Straley, Victoria O'Connell, Lisa Busch, Pete Raimondi, Melissa Miner, and John Straley	Between Pacific tides: Revisiting historical surveys of Sitka through Ricketts, Calvin and Ahlgren	2	
13	187	Gulf of Alaska	William B. Driskell and James R. Payne	Integrated Cook Inlet Environmental Monitoring and Assessment Program (ICIEMAP): Hydrocarbon fingerprinting	2	
13	188	Gulf of Alaska	Allan K. Fukuyama, Gary Gillingham, and S. Ian Hartwell	Integrated Cook Inlet Environmental Monitoring and Assessment Program (ICIEMAP): Benthic infaunal communities	2	
13	189	Gulf of Alaska	S. Ian Hartwell, Douglas Dasher, Larry Clafin, and Ed Johnson	Sediment quality triad assessment in Kachemak Bay and Kenai Peninsula: Characterization of soft bottom benthic habitats and contaminant bioeffects assessment	2	
13	190	Gulf of Alaska	Susan M. Saupe, Allan K. Fukuyama, Gary Gillingham, S. Ian Hartwell, Tim L. Robertson, Mark A. Savoie, and John H. Trefrey	Integrated Cook Inlet Environmental Monitoring and Assessment Program (ICIEMAP): A collaboration of four inlet contaminant studies	2	
13	191	Gulf of Alaska	Susan M. Saupe, Mark A. Savoie, and Tim L. Robertson	Integrated Cook Inlet Environmental Monitoring and Assessment Program (ICIEMAP): Statistical design, field studies, indices, and analytical parameters	2	
13	192	Gulf of Alaska	Mark A. Savoie, Gary Gillingham, and Susan M. Saupe	Integrated Cook Inlet Environmental Monitoring and Assessment Program (ICIEMAP): Distribution patterns and sources for organic contaminants	2	
13	193	Gulf of Alaska	John H. Trefry, Robert P. Trocine, and Mark A. Savoie	Integrated Cook Inlet Environmental Monitoring and Assessment Program (ICIEMAP): Distribution patterns and sources for trace metals	2	
Gulf of Alaska IERP - various sections						
13	194	Gulf of Alaska IERP	Nancy B. Kachel, Ana M. Aguillar-Islas, Calvin W. Mordy, Sigrid A. Salo, Phyllis Stabeno, Suzanne Strom	Alongshelf differences in hydrography and currents in the Gulf of Alaska	2	
13	195	Gulf of Alaska IERP	Kenneth Coyle, Georgina Gibson	Processes controlling on-shelf transport of <i>Neocalanus</i> populations in the northern Gulf of Alaska	2	
13	196	Gulf of Alaska IERP	Russ Hopcroft, Miriam Doyle, Ann Matarese, Calvin Mordy, Jeff Napp, Phyllis Stabeno, Suzanne Strom	A broad-scale look at physics through plankton in the coastal Gulf of Alaska	2	

SORTED BY SECTION AND POSTER NUMBER

Row #	Poster #	LME	Authors	Title	Wave #	Student Judging #
13	197	Gulf of Alaska IERP	Jamal Moss, Wyatt Fournier, Kalei Shotwell	The Gulf of Alaska Project upper trophic level: Preliminary findings from the first field season	2	
13	198	Gulf of Alaska IERP	Franz J. Mueter, Miriam J. Doyle, Jason N. Waite, S. Kalei Shotwell, Kimberly M. Rand, Sarah Hinckley	Gulf of Alaska IERP Retrospective Data Project	2	
13	199	Gulf of Alaska IERP	Carolina Parada, Sarah Hinckley, William Stockhausen, Georgina Gibson	Eddy identification and transport in the Gulf of Alaska: links to simulated particle retention and transport patterns	2	
13	200	Gulf of Alaska IERP	S. Kalei Shotwell, Mark Zimmermann, Jane A. Reid, Nadine Golden	The Gulf of Alaska Project upper trophic level benthic habitat research	2	
13	201	Gulf of Alaska IERP	William T. Stockhausen, Sarah Hinckley, Georgina Gibson, Carolina Parada	Modeling the "Gauntlet" from spawning grounds to juvenile nurseries: individual-based models for the early life stages of 5 focal fish species in the Gulf of Alaska	2	
14	202	Gulf of Alaska IERP	Declined	Declined		
Climate and Oceanography						
14	203	Arctic	Carin J. Ashjian, Robert G. Campbell, Kathy J. Kuletz, Samuel R. Laney, Krista L. Longnecker, Calvin M. Mordy, Stephen R. Okkonen, and Dean A. Stockwell	A winter expedition to explore the biological and physical conditions of the Bering, Chukchi, and southern Beaufort seas	1	
14	204	Arctic	John Calder, James Overland, Carven Scott, and Janet Intrieri	Sea ice forecasting - How NOAA might do it better!	1	
14	205	Arctic	Jared Abraham	A promising tool for subsurface permafrost mapping: An application of airborne geophysics	2	
14	206	Arctic	Li Erikson, Ann E. Gibbs, Bruce Richmond, and Benjamin M. Jones	Climate change impacts on storm surge levels affecting habitats within a barrier-island lagoon system in eastern Arctic Alaska	1	
14	207	Arctic	Kate Hedstrom, Enrique Curchitser, Tom Weingartner, and Seth Danielson	Coupled sea-ice/ocean numerical simulations of the Chukchi and Beaufort Seas	1	
14	208	Arctic	Terry E. Whitledge	R/V Sikuliaq: A new ice-capable resource for research in Alaskan waters	2	
14	209	Arctic	Vladimir Luchin and Gleb Panteleev	Ocean waves conditions in the Chukchi Sea from satellite and in situ observations: Necessity for the observations and numerical modeling	1	
14	210	Arctic	Andy R. Mahoney, Hajo Eicken, Lewis Shapiro, and Allison Graves Gaylord	Lead and landfast sea ice patterns in the Chukchi and Beaufort seas over the past two decades	1	
14	211	Arctic	Xiangdong Zhang, Jing Zhang, Jeremy Krieger, Martha Shulski, Fuhong Liu, Steve Stegall, and Wei Tao	High resolution wind field reanalysis over Beaufort-Chukchi seas: Data introduction and regional climate change detection	2	
15	212	Arctic	Rachel A. Potter, Thomas J. Weingartner, Hank Statscewich, and Peter Winsor	Surface currents in the northeast Chukchi Sea	1	
15	213	Arctic	Chase Stoudt, Kim Martini, and Harper Simmons	Sea ice response to atmospheric storms	1	104
15	214	Arctic	Steve Stegall and Jing Zhang	Wind field climatology, changes, and extremes in the Chukchi/Beaufort seas and Alaska North Slope during 1979-2009	2	105
15	215	Arctic	Peter Winsor, Thomas Weingartner, Hank Statscewich, Rachel Potter, and Madeline Merck	AUV Glider and HF Radar observations of circulation and stratification features in the Chukchi Sea	1	
15	216	Bering Sea	Lisa Eisner and Kristin Cieciel	Integrated primary production in the eastern Bering Sea during late summer/early fall	2	

SORTED BY SECTION AND POSTER NUMBER

Row #	Poster #	LME	Authors	Title	Wave #	Student Judging #
15	217	Bering Sea	Albert J. Hermann, Georgina A. Gibson, Nicholas A. Bond, Enrique N. Curchitser, Kate Hedstrom, Wei Cheng, Muyin Wang, Phyllis Stabeno, Lisa Eisner, Markus Janout, Kerim Aydin, and Ivonne Ortiz	A multivariate analysis of observed and modeled biophysical variability on the Bering Sea shelf: Multidecadal hindcasts (1969-2009) and forecasts (2010-2040)	2	
15	218	Bering Sea	Alexei I. Pinchuk and Kenneth O. Coyle	Variability in <i>Calanus</i> spp. populations on the eastern Bering Sea shelf during the recent cold phase	2	
15	219	Bering Sea	Joel H. Reynolds and Karen Murphy	The Western Alaska Landscape Conservation Cooperative & management information needs regarding terrestrial-marine linkages	2	
15	220	Bering Sea	Phyllis Stabeno, Jeffrey M. Napp, Nicholas A. Bond, and Jeremy Mathis	The status of the Bering Sea in 2011: Cool	2	
15	221	Bering Sea	Cathleen Vestfals, Lorenzo Ciannelli, Janet Duffy-Anderson, and Carol Ladd	Developing eddy activity and transport indices for the Bering slope current	2	181
15	222	Gulf of Alaska	Mark Halverson	Seasonal exchange between Prince William Sound and the Gulf of Alaska	1	
15	223	Gulf of Alaska	Noa Bruhis and David Hill	High-resolution monthly precipitation and temperature grids for Alaska, USA: A resource for hydrological studies	2	290
16	224	Gulf of Alaska	Robert Foy, W. Christopher Long, and Katherine Swiney	The effects of ocean acidification on maternal condition and reproductive success and larval condition and survival of Tanner crabs, <i>Chionoecetes bairdi</i> .	1	
16	225	Gulf of Alaska	Albert J. Hermann, Carol Ladd, Wei Cheng, Enrique N. Curchitser, and Kate Hedstrom	Sources and patterns of interannual oceanic variability of in the Gulf of Alaska	1	
16	226	Gulf of Alaska	Kris Holderied, Danielle Claar, Jennifer Thomas, and Robert Skoumal	Oceanographic variability in Kachemak Bay, Alaska	2	
16	227	Gulf of Alaska	Stacey Reisdorph, Jeremy T. Mathis, Natalie M. Monacci, Seth Danielson, and Lewis Sharman	The impacts of climate induced deglaciation on ocean acidification in Glacier Bay, Alaska: Insights from a new ocean time-series	1	289
16	228	Gulf of Alaska	Katherine Trahanovsky and Terry E. Whitledge	Nutrient dynamics in a productive downwelling system: The coastal Gulf of Alaska 1998-2010	1	284
16	229	Gulf of Alaska	Xiaochun Wang, Yi Chao, John Farrara, and C. J. Beegle-Krause	Seasonal cycle simulation for Prince William Sound, Alaska	2	
Seabirds						
16	230	Arctic	Jane Belovarac and Robert Walton	An atlas of sea duck blood cells	1	
16	231	Arctic	Tawna Morgan, Robert H. Day, Stephen S. Jewett, and Doug H. Dasher	Monitoring marine birds in the nearshore Chukchi Sea: Preliminary findings from the AKMAP Program in the coastal northeastern Chukchi Sea, 2010–2011	2	
16	232	Bering Sea	Gary S. Drew, Christopher F. Waythomas, Jeff Williams, and John F. Piatt	Erosion mitigated recovery of Kasatochi Island nesting areas, 2008-2011	1	
16	233	Bering Sea	Leah A. Kenney and Robb S. A. Kaler	Identifying nesting habitat of <i>Brachyramphus</i> murrelets: Old nests lead to a new breeding record	2	216
16	234	Bering Sea	Annie F. Johns, Julia Parrish, Jane Dolliver, Shanno Fitzgerald, and Annie Woods	Return of the Short-tailed Albatross	1	215
16	235	Bering Sea	Robb S.A. Kaler, Leah A. Kenney, Jeff C. Williams, John Piatt, and Ellen Lance	Breeding ecology of Kittlitz's Murrelet at Agattu Island, Aleutian Archipelago, Alaska: 2011 progress report	2	
17	236	Bering Sea	Rachael A. Orben, Rosana Paredes, Daniel D. Roby, David B. Irons, Richard A. Phillips, and Scott A. Shaffer	Winter migration of Red-legged and Black-legged Kittiwakes from the Pribilof Islands, Alaska	1	214
17	237	Bering Sea	Martin Renner and George L. Hunt	Predicting the spatial abundance of marine organisms - which modeling approach is best?	2	

SORTED BY SECTION AND POSTER NUMBER

Row #	Poster #	LME	Authors	Title	Wave #	Student Judging #
17	238	Gulf of Alaska	Bobby Hsu, Mary Anne Bishop, Kathy Kuletz, and Richard Thorne	Linking hydroacoustic surveys for juvenile herring with winter seabird distribution in Prince William Sound	1	
17	239	Gulf of Alaska	Jonathan A. Runstadler, Mary Anne Bishop, Michelle Wille, Andrew S. Lang, Florian Aldehoff, Lori A. Gildehaus, and Jennifer Paige Gingrich	Avian influenza surveillance of shorebirds and gulls in Cordova	2	
17	240	Gulf of Alaska	James Lawonn, Daniel D. Roby, John F. Piatt, Robin Corcoran, and Bill Pyle	Kittlitz's Murrelets nesting in unglaciated alpine habitat on Kodiak Island, Alaska: Unraveling parts of the mystery	1	336
17	241	Gulf of Alaska	Arthur B. Kettle and Leslie Slater	Use of time-lapse photography to monitor Common Murre productivity on Barwell Island	2	

List of Exhibitors

- Alaska Marine Expeditions
- University of Alaska Fairbanks
- Alaska Regional Collaboration Team (ARCT)
- Sitka Sound Science Center
- Shell
- US Arctic Research Commission
- Bureau of Ocean Energy Management (BOEM)
- Alaska Ocean Observing System (AOOS)
- Alaska Pacific University (APU)
- Sea Grant
- Alaska Department of Fish and Game (ADF&G)
- Prince William Sound – RCAC (PWS – RCAC)
- ENRI – UAA Environmental and Natural Resources
- NOAA – Response and Restoration
- Prince William Sound Science Center and Oil Spill Recovery Institute (PWSSC and OSRI) - Shared
- Government of Canada
- Alaska Center for Ocean Science Education Excellence (ACOSEE)
- National Park Service (NPS)
- North Pacific Research Board (NPRB)
- U.S. Geological Survey (USGS) – includes Alaska Science Center, Alaska Region and Alaska Volcano Observatory
- EcoAnalysts, Inc.

We would like to thank all of the poster presenters and exhibitors whose science and dedication made all this possible.

- Mary Whalen - Poster Chairperson
- Terry Thompson - Exhibits Chairperson



This program was funded by the US Geological Survey